

CERTIFIED LAND CORNER RECORDATION

(REFERENCE FSM 7153.53)

DESCRIPTION OF CORNER EVIDENCE FOUND, AND ORIGINAL RECORD (IF KNOWN)

RECORD: SET A 24" X 8" X 6" SLATE STONE MARKED "6 HES 1065" ON NE FACE & "X" ON TOP
 1921 GLO FROM WHICH: A 6" CEDAR BEARS S 70° 25' E, 28 LKS (18.5')
 AN 8" CEDAR BEARS N 60° 51' E, 46 LKS (30.4')

FOUND: A 12" X 6" SANDSTONE APPROX. 8" ABOVE GROUND FIRMLY SET IN PLACE. STONE IS SCRIBED
 WITH AN "X" ON TOP & "5 HES 1065" ON NE FACE.
 A ROTTED STUMP BEARS S 07° E, 17.5 FT

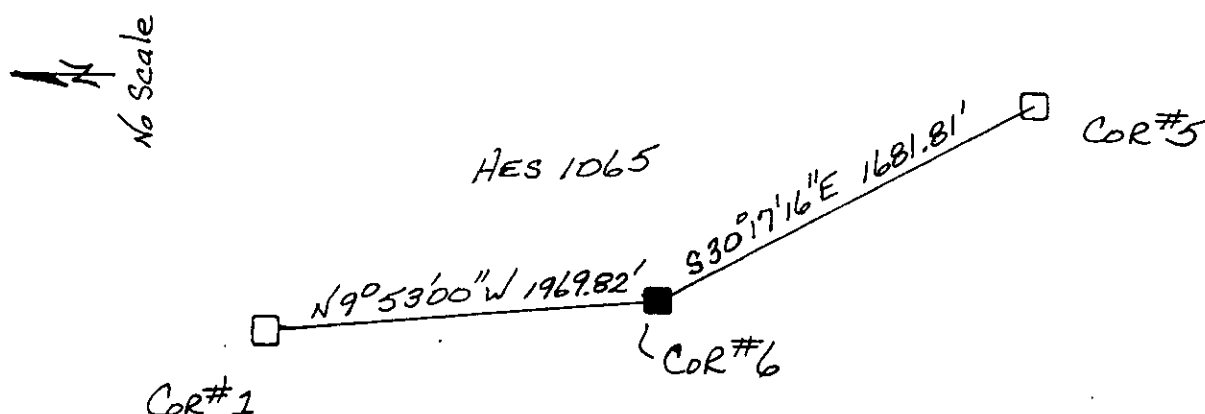
DESCRIPTION OF MONUMENT AND ACCESSORIES ESTABLISHED TO PERPETUATE THE ORIGINAL LOCATION OF THIS CORNER:

CLEARED AREA AROUND FOUND STONE & HIGHLIGHTED "X" WITH RED PAINT. Date of work: 12-26-80

MARKED TWO NEW. A 7" CEDAR BEARS N 06° E, 7.0 FT MKD "6 1065 BT"
 BEARING TREES - A 5" CEDAR BEARS S 48° W, 11.4 FT MKD "X BT"

PAINTED RED BANDS AROUND BT'S.

SKETCH, WITH COURSE AND DISTANCE TO ADJACENT CORNERS IF DETERMINED IN THIS SURVEY. (MAY SKETCH OR PASTE REPRODUCTION ON REVERSE SIDE.)



Surveyor's Seal



I, ANTHONY J. BACHMAN
 certify that the information shown herein is true and correct.

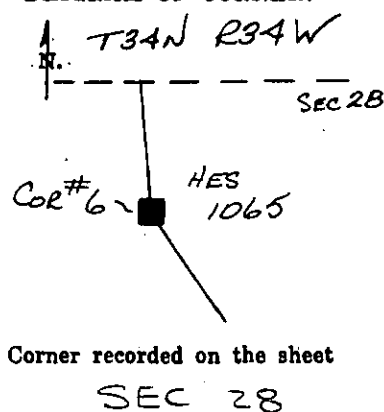
Signature of Ground Party Chief

I, THOMAS C. HILL
 certify that I have carefully performed or reviewed the work done on the diagrammed corner as reported on this recordation form and approve the same.

Thomas C. Hill
 Signature of Surveyor

5612 S
 Registration Number

DIAGRAM OF CORNER:



Office of Clerk and Recorder, County of Lincoln

This "corner record" was filed for record on the 9th day of February, 1981, was noted on the cross-index plat and is assigned page No. 1012, in book No. 1

Eleanor L. Hughes by Betty G. Kelly
 County Official Deputy

Cross Index No. S-10 T. 34N R. 34W P. 1st Mer.