

CERTIFIED LAND CORNER RECORDATION
(REFERENCE FSM 7153.53)

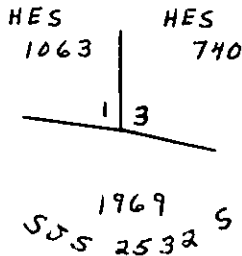
DESCRIPTION OF CORNER EVIDENCE FOUND, AND ORIGINAL RECORD (IF KNOWN)

Found original cornerstone firmly set and plainly marked (Record-set a small stone, marked with a cross (x) under a sandstone 24 X 6 X 6 ins., 14 ins. in the ground, marked 3 HES 740 on NE face and a cross (x) on top for exact corner point)
from which: A 16 inch white pine bears S 80¹/₄°W - 32 links., alive and plainly marked. (Record - a cross (x) on a pine tree 9 in. dia., bears S 80°15'W., 33 links distant.) A 16 inch larch bears S 16¹/₂°W - 48 links., stump with overgrown blaze. (Record - A cross (x) on a larch tree 12 in., dia., bears S 16°30'W., 48 links distant; each blazed and scribed 3 HES 740 BT.)

DESCRIPTION OF MONUMENT AND ACCESSORIES ESTABLISHED
TO PERPETUATE THE ORIGINAL LOCATION OF THIS CORNER:

Date of work: 12/3/69

I set a 2 inch galvanized iron pipe 24 inches in the ground in the exact position of the original stone corner monument and buried the original stone alongside the iron pipe, with brass cap marked. from which:
A 8 inch Larch bears N 68°E - 26 links, scribed 3 RM



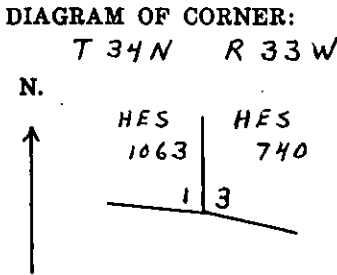
SKETCH, WITH COURSE AND DISTANCE TO ADJACENT CORNERS IF DETERMINED IN THIS SURVEY.
(MAY SKETCH OR PASTE REPRODUCTION ON REVERSE SIDE.)

(Record from original field notes)

Surveyor's Seal

I, A. R. Trenkle
certify that the information shown herein is true and correct.
A. R. Trenkle
Signature of Ground Party Chief

I, Stanley J. Skousen
certify that I have carefully performed or reviewed the work done on the diagrammed corner as reported on this recordation form and approve the same.
Stanley J. Skousen
Signature of Surveyor



= Corner recorded on the sheet

2532 S
Registration Number

Office of Clerk and Recorder, County of Lincoln
This "corner record" was filed for record on the 19th. day of February 19 70, was noted on the cross-index plat and is assigned page No. 169, in book No. 1
ELEANOR L. VAUGHN, By: Mae Wilson
County Official Deputy.
Cross Index No. V- 21 T 34 R 33 Mer.