

INSTRUCTIONS

1. Original and/or subsequent record used to evaluate the corner position.
2. Description of evidence found, note discrepancies in the record, state method of establishing lost or obliterated corners.
3. Description of monument and accessories set to perpetuate the corner position.
4. Sketch of corner, show all pertinent data which can best be shown in a sketch example, corner marking, topography ties, position of accessories, etc.
5. Certification must be signed and sealed by Land Surveyor registered in the State of Montana.
6. Fill in Cross Index & Section Diagram at bottom of sheet.

CERTIFIED CORNER RECORDATION

Corner 4 of HES 739 T. 34 N. R. 32 W. P.M.M. Lincoln County

- I. 1917 HES 739 original record by E. R. Johnson: "Cor. No. 4 of this survey, as follows: Set a small stone, marked with a cross (X) under a quartzite stone 24 x 10 x 6 inc., 14 ins. in the ground, marked 4 HES 739 on the NE face and a cross (X) on top for the exact corner point.

from which:

- A cross (X) on a larch tree, 24 ins. diam., bears N. $82^{\circ}30'W.$, 88 lks. dist.
 A cross (X) on a larch tree, 24 ins. diam., bears S. $20^{\circ}00'W.$, 61 lks. dist.,
 each blazed and scribed 4 HES 739 BT.
 Raise a mound of stone 4 ft. base, 2 ft. high, NE of corner.

- II. Found a firmly set 10x6 ins. stone, protruding 8 ins. out of the ground. Marked 4 HES 739 on the NE face.

From which:

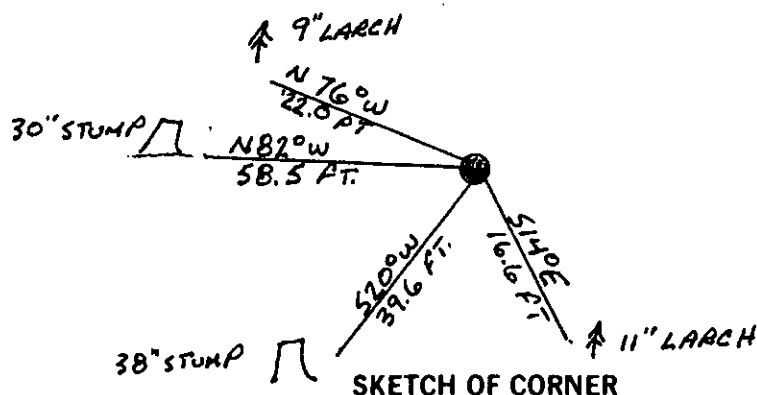
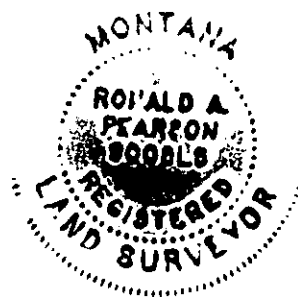
- A larch stump, 38 ins. diam., bears S $20^{\circ}W.$, 39.6 ft. (60.00 lks.) dist., no scribe.
 A larch stump, 30 ins. diam., bears N $82^{\circ}W.$, 58.5 ft. (88.63 lks.) dist., no scribe.
 A mound of stone 3 ft. base, 2 ft. high, NE. of corner.

- III. Established two new bearing trees:

- A larch, 11 ins. diam., bears S $14^{\circ}E.$, 16.6 ft. dist., marked 4 HES 739 BT.
 A larch, 9 ins. diam., bears N $76^{\circ}W.$, 22.0 ft. dist., marked 4 HES 739 BT.

Painted red bands around the bearing trees and attached "Land Survey Monument" and "Bearing Tree" signs.
 Set a galvanized steel guard post with "Land Survey Marker" and "Property Boundary" decals, 3 ft. S $54^{\circ}E$ of the corner.

Magnetic declination: 20° East



CERTIFICATION

I, Kevin A. Todd
 certify the information shown herein is true and correct.

Kevin A. Todd
 Signature Ground Party Chief

I, Ronald A. Pearson
 certify that this Corner Record correctly represents work performed
 by me or under my direction in compliance with the "Corner
 Recordation Act" (70-22-101, et seq., M.C.A.)

Ronald A. Pearson
 Signature of Surveyor & Seal

Date: 11/16/92 Reg. No. 9008LS

Employer: U.S. FOREST SERVICE

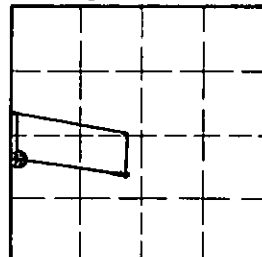
Office of Clerk and Recorder, County of Lincoln. This "corner
 record" was filed for record on 12-7-92
 was noted on the cross-index plat and is assigned page No. 5105, in
 book No. Coral M. Cummings

County Official

4 HES 739 34 N 32 W

Cross Index No. T. R. PMM

Sec. 31



• - corner this sheet