

INSTRUCTIONS

1. Original and/or subsequent record used to evaluate the corner position.
2. Description of evidence found, note discrepancies in the record, state method of establishing lost or obliterated corners.
3. Description of monument and accessories set to perpetuate the corner position.
4. Sketch of corner, show all pertinent data which can best be shown in a sketch example, corner marking, topography ties, position of accessories, etc.
5. Certification must be signed and sealed by Land Surveyor registered in the State of Montana.
6. Fill in Cross Index & Section Diagram at bottom of sheet.

CERTIFIED CORNER RECORDATION

Corner 3 of HES 739, 6 of HES 1247 T. 34 N. R. 32 W. Lincoln County

- I. 1917 HES 739 original record by E. R. Johnson: "Cor. No. 3 of this survey, as follows: Set a small stone, marked with a cross (X) under a quartzite stone 30 x 12 x 8 inc., 20 ins. in the ground, marked 3 HES 739 on the NW face and a cross (X) on top for the exact corner point.

No bearings available, therefore dig pits 24 x 24 x 12 ins. crosswise on this and the succeeding course 7 ft. distant, and raise a mound of earth 4 ft. base, 2 ft. high, NW of corner."

1932 HES 1247 original record by A. O. Modlin: "Cor. No. 3 of patented HES No. 739, which is a quartzite stone 14 x 12 x 10 ins. above ground, marked as described in the original survey, but with pits and a mound of earth entirely obliterated. I adopt this corner for Cor. No. 6 of this survey, and marked it 6 HES 1247 on the NE face. The cross on top is the exact corner point.

No bearings available and pits impracticable. Raise a mound of earth 4 ft. base, 2 ft. high, NE. of corner."

- II. Found a firmly set 7x7 ins. stone, protruding 13 ins. out of the ground. Marked 3 HES 739 on the NW face and 6 HES 1247 on the NE face.

From which:

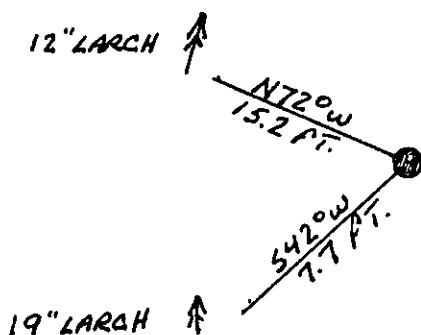
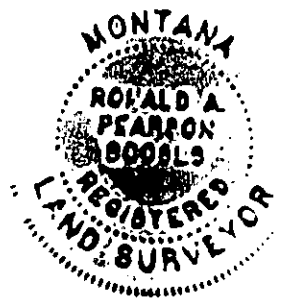
- A mound of stone 4 ft. base, 3 ft. high, NE. of corner.
- Pit 2 ft. x 1 ft., 7 ft. dist., N54° W of corner.
- Pit 2 ft. x 1 ft., 7 ft. dist., South of corner.

- III. Established two new bearing trees:

- A larch, 19 ins. diam., bears S42° W, 7.7 ft. dist., marked 6 HES 1247 BT.
- A larch, 12 ins. diam., bears N72° W, 15.2 ft. dist., marked 3 HES 739 BT.

Painted red bands around the bearing trees and attached "Land Survey Monument" and "Bearing Tree" signs. Set a galvanized steel guard post with "Land Survey Marker" and "Property Boundary" decals, 3 ft. N54° W of the corner.

Magnetic declination: 20° East



SKETCH OF CORNER

CERTIFICATION

I, Kevin A. Todd
certify the information shown herein is true and correct.

Kevin A. Todd
Signature Ground Party Chief

I, Ronald A. Pearson
certify that this Corner Record correctly represents work performed by me or under my direction in compliance with the "Corner Recordation Act" (70-22-101, et seq., M.C.A.)

Ronald A. Pearson
Signature of Surveyor & Seal

11/16/92 9008LS
Date: Reg. No.

Employer: U.S. FOREST SERVICE

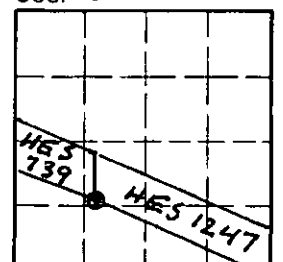
Office of Clerk and Recorder, County of Lincoln. This "corner record" was filed for record on 12-7-92 was noted on the cross-index plat and is assigned page No. 5103, in book No. Coral M. Cummings

County Official

3 HES 739 34 N 32 W

Cross Index No. T. R. PMM

Sec. 31



• - corner this sheet