

INSTRUCTIONS

1. Original and/or subsequent record used to evaluate the corner position.
2. Description of evidence found, note discrepancies in the record, state method of establishing lost or obliterated corners.
3. Description of monument and accessories set to perpetuate the corner position.
4. Sketch of corner, show all pertinent data which can best be shown in a sketch example, corner marking, topography ties, position of accessories, etc.
5. Certification must be signed and sealed by Land Surveyor registered in the State of Montana.
6. Fill in Cross Index & Section Diagram at bottom of sheet.

CERTIFIED CORNER RECORDATION

Corner 3 of HES 1247 T. 34 N. R. 32 W. Lincoln County

- I. 1932 HES 1247 original record by A. O. Modlin: "Cor. No. 3 of this survey as follows: Place a small stone marked with a cross (X) under a granite stone 32 x 16 x 14 ins., 22 ins. in the ground, marked 3 HES 1247 on the NW face and a cross (X) on top for the exact corner point.

No bearings available and pits impracticable. Raise a mound of stone 4 ft. base, 2 ft. high, NW of corner."

- II. Found a firmly set 15x14 ins. stone, protruding 10 ins. out of the ground. Marked 3 HES 1247 on the north face.

A mound of stone 4 ft. base, 2ft. high, 4 ft. north of corner.

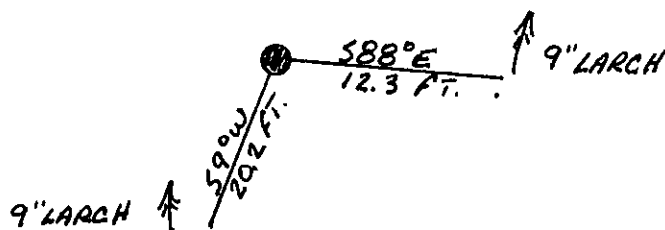
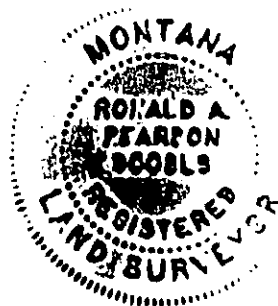
- III. Established two new bearing trees:

A larch, 9 ins. diam., bears S88° E, 12.3 ft. dist., mkd. 3 HES 1247 BT.

A larch, 9 ins. diam., bears S9° W, 20.2 ft. dist., mkd. 3 HES 1247 BT.

Painted red bands around the bearing trees and attached "Land Survey Monument" and "Bearing Tree" signs. Set a galvanized steel guard post with "Land Survey Marker" and "Property Boundary" decals, 3 ft. N75° W of the corner.

Magnetic declination: 20° East



SKETCH OF CORNER

CERTIFICATION

I, Kevin A. Todd
certify the information shown herein is true and correct.

Kevin A. Todd
Signature Ground Party Chief

I, Ronald A. Pearson
certify that this Corner Record correctly represents work performed by me or under my direction in compliance with the "Corner Recordation Act" (70-22-101, et seq., M.C.A.)

Ronald A. Pearson
Signature of Surveyor & Seal

Date: 11/16/92 Reg. No. 9008LS

Employer: U.S. FOREST SERVICE

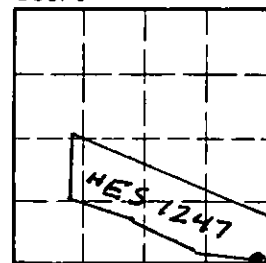
Office of Clerk and Recorder, County of Lincoln. This "corner record" was filed for record on 12-7-92 was noted on the cross-index plat and is assigned page No. 5102, in book No. Coral M. Cummings

County Official

3 HES 1247 34 N 32 W

Cross Index No. T. R. PMM

Sec. 31



• - corner this sheet