

## INSTRUCTIONS

1. Original and/or subsequent record used to evaluate the corner position.
2. Description of evidence found, note discrepancies in the record, state method of establishing lost or obliterated corners.
3. Description of monument and accessories set to perpetuate the corner position.
4. Sketch of corner, show all pertinent data which can best be shown in a sketch example, corner marking, topography ties, position of accessories, etc.
5. Certification must be signed and sealed by Land Surveyor registered in the State of Montana.
6. Fill in Cross Index & Section Diagram at bottom of sheet.

## CERTIFIED CORNER RECORDATION

Corner 2 of HES 739, 1 of HES 1247 T. 34 N. R. 32 W. P.M.M. Lincoln County

- I. 1917 HES 739 original record by E. R. Johnson: "Cor. No. 2 of this survey, as follows: Set a small stone, marked with a cross (X) under a sandstone 30 x 12 x 8 inc., 20 ins. in the ground, marked 2 HES 739 on the SW face and a cross (X) on top for the exact corner point.

No bearings available, therefore dig pits 24 x 24 x 12 ins. crosswise on this and the succeeding course 7 ft. distant, and raise a mound of earth 4 ft. base, 2 ft. high, SW of corner."

1932 HES 1247 original record by A. O. Modlin: "Cor. No. 2 of patented HES No. 739, which is a sandstone 12 x 10 x 4 ins., broken off at ground level, with pits and mound as described in the field notes of original survey obliterated. I restore this corner as follows: Place a small stone marked with a cross (X) under a granite stone 26 x 10 x 9 ins. 16 ins. in the ground, marked 2 HES 739 on the SW., and 1 - HES 1247 on the SE faces, and a cross (X) on the top for the exact corner point.

No bearings available and pits impracticable. Raise a mound of earth 4 ft. base, 2 ft. high, SE. of corner."

- II. Found a firmly set 11x9 ins. stone, protruding 10 ins. out of the ground. Marked 2 HES 739 on the SW face and 6 HES 1247 on the SE face (6 is not in record!)

from which:

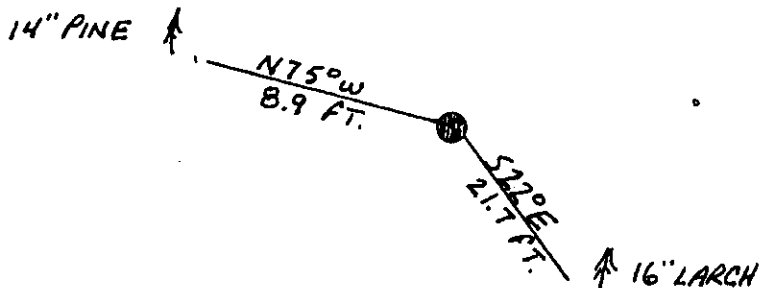
A larch, 16 ins. in diam., bears S22° E, 21.7 ft. dist, healed face. (No record)

A pine, 14 ins. diam., bears N75° W, 8.9 ft. dist, marked 2 HES 739 BT. (No record)

Found no mound.

- III. Painted red bands around the bearing trees and attached "Land Survey Monument" and "Bearing Tree" signs. Set a galvanized steel guard post with "Land Survey Marker" and "Property Boundary" decals, 3 ft. S60° E. of the corner.

Magnetic declination: 20° East



SKETCH OF CORNER

CERTIFICATION

I, Kevin A. Todd  
certify the information shown herein is true and correct.  
Kevin A. Todd  
Signature Ground Party Chief

I, Ronald A. Pearson  
certify that this Corner Record correctly represents work performed by me or under my direction in compliance with the "Corner Recordation Act" (70-22-101, et seq., M.C.A.)  
Ronald A. Pearson  
Signature of Surveyor & Seal

Date: 11/16/92 Reg. No. 9008LS  
Employer: U.S. FOREST SERVICE

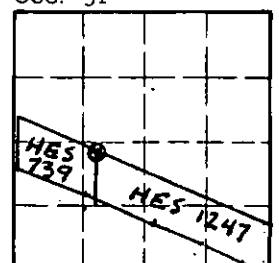
Office of Clerk and Recorder, County of Lincoln. This "corner record" was filed for record on Dec 7, 1992 was noted on the cross-index plat and is assigned page No. 5100, in book No. Coral M. C. [unclear]

County Official

2 HES 739 34 N 32 W

Cross Index No. T. R. PMM

Sec. 31



• - corner this sheet