

INSTRUCTIONS

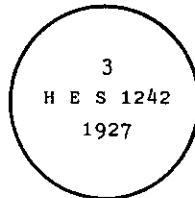
1. Original and/or subsequent record used to evaluate the corner position.
2. Description of evidence found, note discrepancies in the record, state method of establishing lost or obliterated corners.
3. Description of monument and accessories set to perpetuate the corner position.
4. Sketch of corner, show all pertinent data which can best be shown in a sketch example, corner marking, topography ties, position of accessories, etc.
5. Certification must be signed and sealed by Land Surveyor registered in the State of Montana.
6. Fill in Cross Index & Section Diagram at bottom of sheet.

CERTIFIED CORNER RECORDATION

Corner 3 of HES 1242 T. 34 N. R. 32 W. P.M.M. Lincoln County

I. 1927 H.E.S. original record by Harold Townsend:

Place a small stone marked with a cross (x) under a iron post 36 ins. long, 2 ins. in diam., 24 ins. in ground, with a brass cap marked:



From which:

- A cross (X) on a tamarack tree, 9 ins. in diam., bears S. $20^{\circ} 30'$ E., 13 links dist.
 A cross (X) on a tamarack tree, 8 ins. in diam., bears S. $81^{\circ} 03'$ E., 27 links dist.

Each blazed and scribed 3 HES 1242 BT.

Raise a mound of earth 4 ft. base, 2 ft. high, SE. of corner.

II. Found a 2 ins. diam. pipe with brass cap mkd as shown above. Firmly in place - protruding 12 ins. out of the ground.

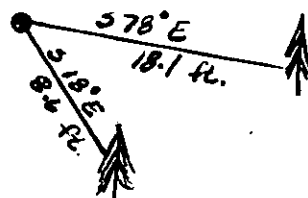
From which:

- A larch, 16 ins. diam., bears S. 18° E., 8.6 ft. (13.0 lks.) dist., visible scribing.
 A larch, 15 ins. diam., bears S. 78° E., 18.1 ft. (27.4 lks) dist., visible face.

III. Painted red bands around the bearing trees and attached "Land Survey Monument" and "Bearing Tree" signs where needed.

Set a 6 ft. galvanized steel guard post with "Land Survey Marker" and "Property Boundary" decals, East, 3 ft. dist.

Magnetic declination: 20° East



SKETCH OF CORNER

CERTIFICATION

I, Kenneth Kern
 certify the information shown herein is true and correct.

Kenneth R Kern
 Signature Ground Party Chief

I, Alvah F. Hughes
 certify that this Corner Record correctly represents work performed by me or under my direction in compliance with the "Corner Recordation Act" (70-22-101, et seq., M.C.A.)

Alvah F Hughes
 Signature of Surveyor & Sealer

Date: 11/26/91 Reg. No. 7322

Employer: U.S. FOREST SERVICE

Office of Clerk and Recorder, County of Lincoln. This "corner record" was filed for record on 4-21-92 was noted on the cross-index plat and is assigned page No. 5038, in book No. Coral M. Commings

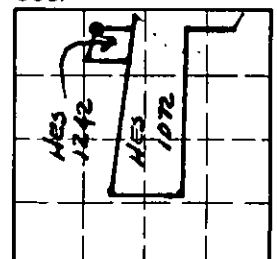
County Official [Signature]

3 HES 1242

34 N 32 W

Cross Index No. _____ T. _____ R. _____ PMM

Sec. 2



• - corner this sheet