

## INSTRUCTIONS

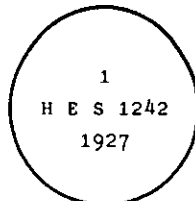
1. Original and/or subsequent record used to evaluate the corner position.
2. Description of evidence found, note discrepancies in the record, state method of establishing lost or obliterated corners.
3. Description of monument and accessories set to perpetuate the corner position.
4. Sketch of corner, show all pertinent data which can best be shown in a sketch example, corner marking, topography ties, position of accessories, etc.
5. Certification must be signed and sealed by Land Surveyor registered in the State of Montana.
6. Fill in Cross Index & Section Diagram at bottom of sheet.

## CERTIFIED CORNER RECORDATION

Corner 1 of HES 1242 T. 34 N. R. 32 W. P.M.M. Lincoln County

## I. 1927 H.E.S. original record by Harold Townsend:

Place a small stone marked with a cross (x) under a iron post 36 ins. long, 2 ins. in diam., 24 ins. in ground, with a brass cap marked:



From which:

A cross (X) on a balsam fir tree, bears S.  $14^{\circ} 30'$  W., 5 links dist.

A cross (X) on a cedar tree, bears West, 26 links dist.

Each blazed and scribed 1 H E S 1242 B T.

Raise a mound of earth 4 ft. base, 2 ft. high, NW. of corner.

## II. Found a 2 ins. diam. pipe with brass cap mkd as shown above, from which no accessories found.

## III. Established two bearing trees:

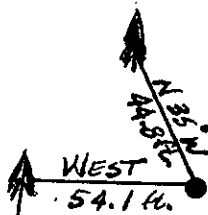
A spruce, 10 ins. diam., bears West, 54.1 ft. dist., scribed 1 HES 1242 BT.

A fir, 6 ins. diam., bears N.  $35^{\circ}$  W., 44.8 ft. dist., scribed 1 HES 1242 BT.

Painted red bands around the bearing trees and attached "Land Survey Monument" and "Bearing Tree" signs where needed.

Set a 6 ft. galvanized steel guard post with "Land Survey Marker" and "Property Boundary" decals, West. 3 ft. dist.

Magnetic declination:  $20^{\circ}$  East



SKETCH OF CORNER

## CERTIFICATION

I, Kenneth Kern  
certify the information shown herein is true and correct.

Kenneth R Kern  
Signature Ground Party Chief

I, Alvah F. Hughes  
certify that this Corner Record correctly represents as of the date of recording by me or under my direction in compliance with the "Corner Recordation Act" (70-22-101, et seq., M.C.A.).

Alvah F. Hughes  
Signature of Surveyor & Seal

Date: 11/26/91 Reg. No. 7322

Employer: U.S. FOREST SERVICE

Office of Clerk and Recorder, County of Lincoln. This "corner record" was filed for record on 4-21-92 was noted on the cross-index plat and is assigned page No. 5036, in book No. Coral M. Cummings

County Official

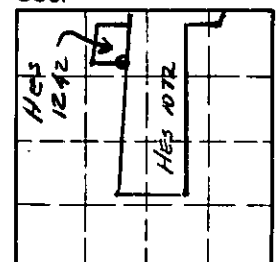
1 HES 1242

34 N

32 W

Cross Index No. T. R. PMM

Sec. 2



• - corner this sheet