

## INSTRUCTIONS

1. Original and/or subsequent record used to evaluate the corner position.
2. Description of evidence found, note discrepancies in the record, state method of establishing lost or obliterated corners.
3. Description of monument and accessories set to perpetuate the corner position.
4. Sketch of corner, show all pertinent data which can best be shown in a sketch example, corner marking, topography ties, position of accessories, etc.
5. Certification must be signed and sealed by Land Surveyor registered in the State of Montana.
6. Fill in Cross Index & Section Diagram at bottom of sheet.

## CERTIFIED CORNER RECORDATION

Corner 5 of HES 1064 34 N., 32 W., Lincoln County  
T.                      R.                      P.M.M.                     

- I. 1921 H.E.S. original record by Grant Higgins: Set a sandstone 24x11x7 ins., 14 ins. in the ground, mkd. 5 HES 1064 on NW face and a cross (x) on top for the exact corner position.

No bearings available, therefore dig pit 24x24x12 ins. crosswise on this and the succeeding course, 7 ft. dist.

Raise a mound of earth and stone 4 ft. base, 2 ft. high, NW. of Corner.

- II. Found a firmly set stone, 10x10x6 ins., mkd. 5 HES 1064 on the NW. face, with a cross on top.

From which:

A mound of stone bears NW. of the corner.

No evidence of the original pits.

Corner position was checked by survey.

- III. Established two new bearing trees:

A lodgepole pine, 9 ins. diam., bears N.85° E., 23.1 ft. dist, scribed 5 HES 1064 BT.

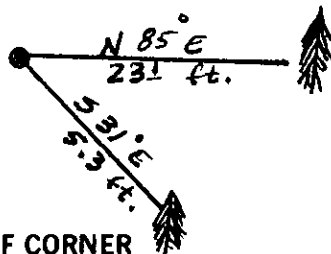
A lodgepole pine, 7 ins. diam., bears S.31° E., 5.3 ft. dist, scribed 5 HES 1064 BT.

Rebuilt rock mound NW. of the corner.

Painted red bands around the bearing trees and attached "Land Survey Monument" and "Bearing Tree" signs where needed.

Set a 6 ft. galvanized steel guard post with "Land Survey Marker" and "Property Boundary" decals, N.29° E., 4 ft. dist.

Magnetic declination: 20° East



SKETCH OF CORNER

## CERTIFICATION

Tom Hommel

I, Tom Hommel certify the information shown herein is true and correct.

Signature Ground Party Chief

Alvah F. Hughes

I, Alvah F. Hughes certify that this Corner Record correctly represents the corner as shown by me or under my direction in compliance with the "Corner Recordation Act" (70-22-101, et seq., M.C.S.A.)

Signature of Surveyor & Seal

Date: 11/26/91 Reg. No. 7322, L.S.

Employer: U.S. FOREST SERVICE

Office of Clerk and Recorder, County of Lincoln. This "corner record" was filed for record on 4-21-92 was noted on the cross-index plat and is assigned page No. 5035, in book No. Coral M. Cummings

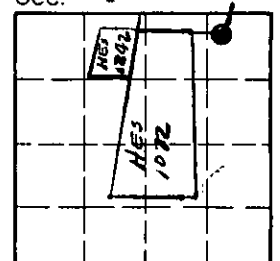
County Official

5 HES 1064

34 N 32 W

Cross Index No.                      T.                      R.                      PMM

Sec. 2



• - corner this sheet