

## INSTRUCTIONS

1. Original and/or subsequent record used to evaluate the corner position.
2. Description of evidence found, note discrepancies in the record, state method of establishing lost or obliterated corners.
3. Description of monument and accessories set to perpetuate the corner position.
4. Sketch of corner, show all pertinent data which can best be shown in a sketch example, corner marking, topography ties, position of accessories, etc.
5. Certification must be signed and sealed by Land Surveyor registered in the State of Montana.
6. Fill in Cross Index & Section Diagram at bottom of sheet.

## CERTIFIED CORNER RECORDATION

Corner 4 of HES 1072 T. 34 N. R. 32 W. P.M.M. Lincoln County

- I. 1923 H.E.S. original record by J. F. Pfau Set a limestone 24x9x5 ins., 14 ins. in the ground, mkd. 4 HES 1072 on the NW face with a cross (x) on top for the exact corner position.

from which:

- A cross (X) on a larch tree, 6 ins. diam., bears S.  $15^{\circ}$  10' W., 12 lks. dist.  
A cross (X) on a larch tree, 7 ins. diam., bears N.  $3^{\circ}$  27' W., 19 lks. dist.

Each blazed and scribed 4-H.E.S. 1072 B.T.

A mound of stone, 4 ft. base, 2 ft. high erected in original survey, lies N.W. of cor.

- II. Found a stone, 24x9x5 ins., marked 4 HES 1072 on the N.W. face, and with a cross (X) on top. Firmly in place. Mound of stone NW of corner.

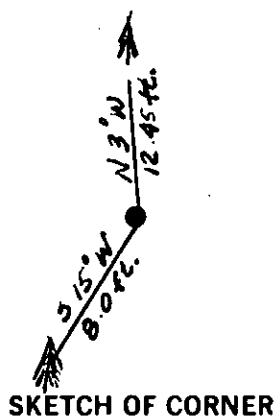
from which:

- A larch, 10 ins. diam., bears S.  $15^{\circ}$  W., 8.0 ft. dist. ( 12.1 lks.) healed face.  
A larch, 14 ins. diam., bears N.  $3^{\circ}$  W., 12.45 ft. dist. ( 18.9 lks.) healed face.

- III. Painted red bands around the bearing trees and attached "Land Survey Monument" and "Bearing Tree" signs where needed.

Set a 6 ft. galvanized steel guard post with "Land Survey Marker" and "Property Boundary" decals, S.  $12^{\circ}$  W., 4 ft. dist.

Magnetic declination:  $20^{\circ}$  East



SKETCH OF CORNER

## CERTIFICATION

I, Kenneth Kern  
certify the information shown herein is true and correct.

Kenneth R. Kern  
Signature Ground Party Chief

I, Alvah F. Hughes  
certify that this Corner Record correctly represents work performed by me or under my direction in compliance with the "Corner Recordation Act" (70-22-101, et seq., M.C.A.)

Alvah F. Hughes  
Signature of Surveyor in Charge

Date: 11/26/91 Reg. No. 7322

Employer: U.S. FOREST SERVICE

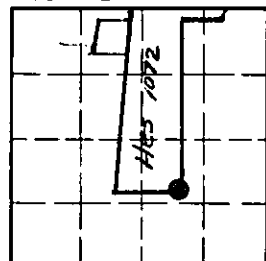
Office of Clerk and Recorder, County of Lincoln. This "corner record" was filed for record on 4-21-92 was noted on the cross-index plat and is assigned page No. 5029, in book No. Coral M. Cummings

County Official 4

4 HES 1072 34 N 32 W

Cross Index No. \_\_\_\_\_ T. \_\_\_\_\_ R. \_\_\_\_\_ PMM

Sec. 2



• - corner this sheet