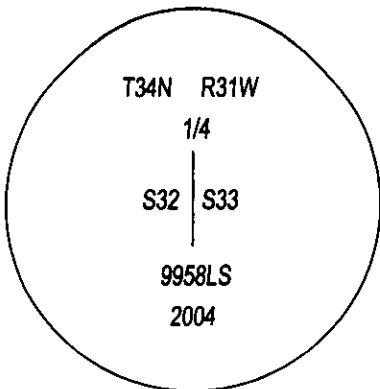
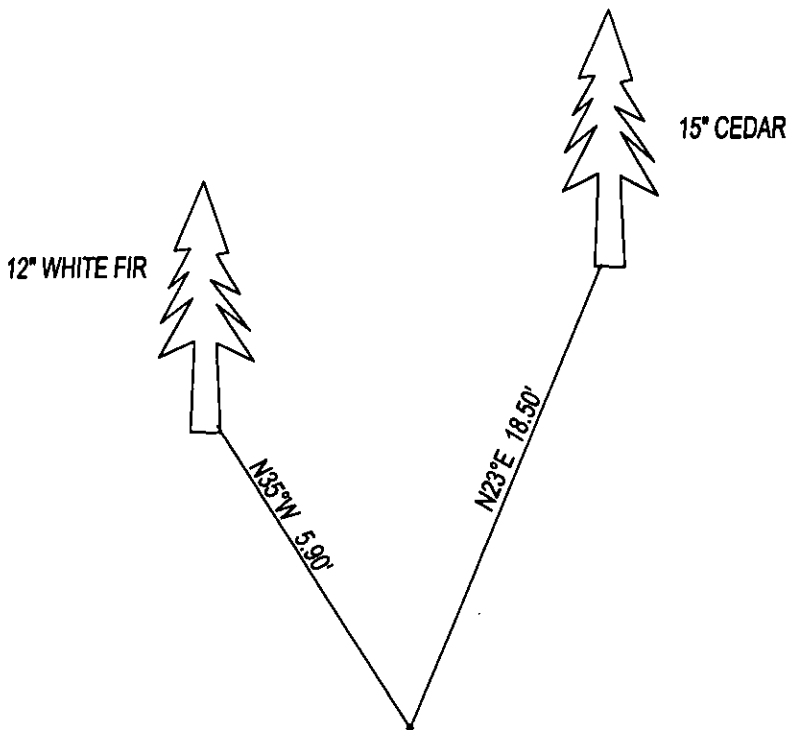


CERTIFIED CORNER RECORDATION

CORNER E1/4 CORNER SEC. 32 T. 34N, R. 31W, P.M.M., LINCOLN COUNTY

FOUND: 3 1/4" ALUM CAP IN A MOUND OF STONE STAMPED AS SHOWN, FROM WHICH;
15" CEDAR BEARS N23°E 18.50' WITH VISIBLE SCRIBE.
12" WHITE FIR BEARS N35°W 5.90' WITH VISIBLE SCRIBE.

MAINTENANCE: REMOVED BRUSH AND TREE LIMBS FROM CORNER AREA AND SET STEEL POSTS
SOUTH 2 FEET AND WEST 2 FEET FROM CORNER, PAINTED RED BANDS AND SCRIBE AREA ON
ALL BEARING TREES.



SKETCH OF CORNER

CERTIFICATION

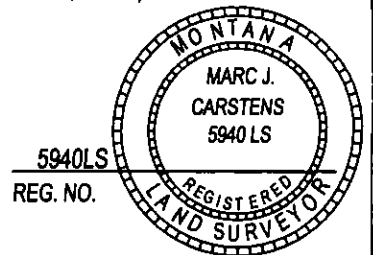
I, DAN CROFT
CERTIFY THE INFORMATION SHOWN HEREIN IS TRUE AND CORRECT.

SIGNATURE GROUND PARTY CHIEF

I, MARC J. CARSTENS
CERTIFY THAT THIS CORNER RECORD CORRECTLY REPRESENTS WORK
PERFORMED BY ME OR UNDER MY DIRECTION IN COMPLIANCE WITH THE
"CORNER RECORDATION ACT" (70-22-101, ET SEQ., M.C.A.)

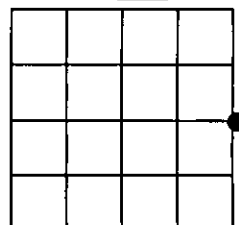
[Signature]
SIGNATURE OF SURVEYOR & SEAL

07-15-14
DATE
CARSTENS SURVEYING
EMPLOYER



OFFICE OF CLERK AND RECORDER, COI' 252392 BOOK: CCR CCR'S PAGE: 12128 Pages: 1
THIS "CORNER RECORD" WAS FILED FO STATE OF MONTANA LINCOLN COUNTY
AND IS ASSIGNED PAGE NO. 9958LS WAS NOTE RECORDED: 07/18/2014 10:00 KOI: CCR'S
TAMMY D. LAUER CLERK AND RECORDER
FEE: \$0.00 BY: [Signature]
FOR: CARSTENS LAND SURVEYING P.O. BOX 1374, POLSON, MONTANA
COUNTY OFFICIAL
CROSS INDEX NO. X-9 T. 34N, R. 31W, P.M.M.
ADOPTED JULY 1, 1981, MONTANA BOARD OF PROFESSIONAL ENGINEERS & LAND SURVEYORS

SEC. 32



● CORNER THIS SHEET