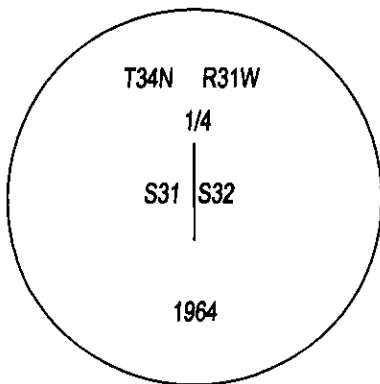
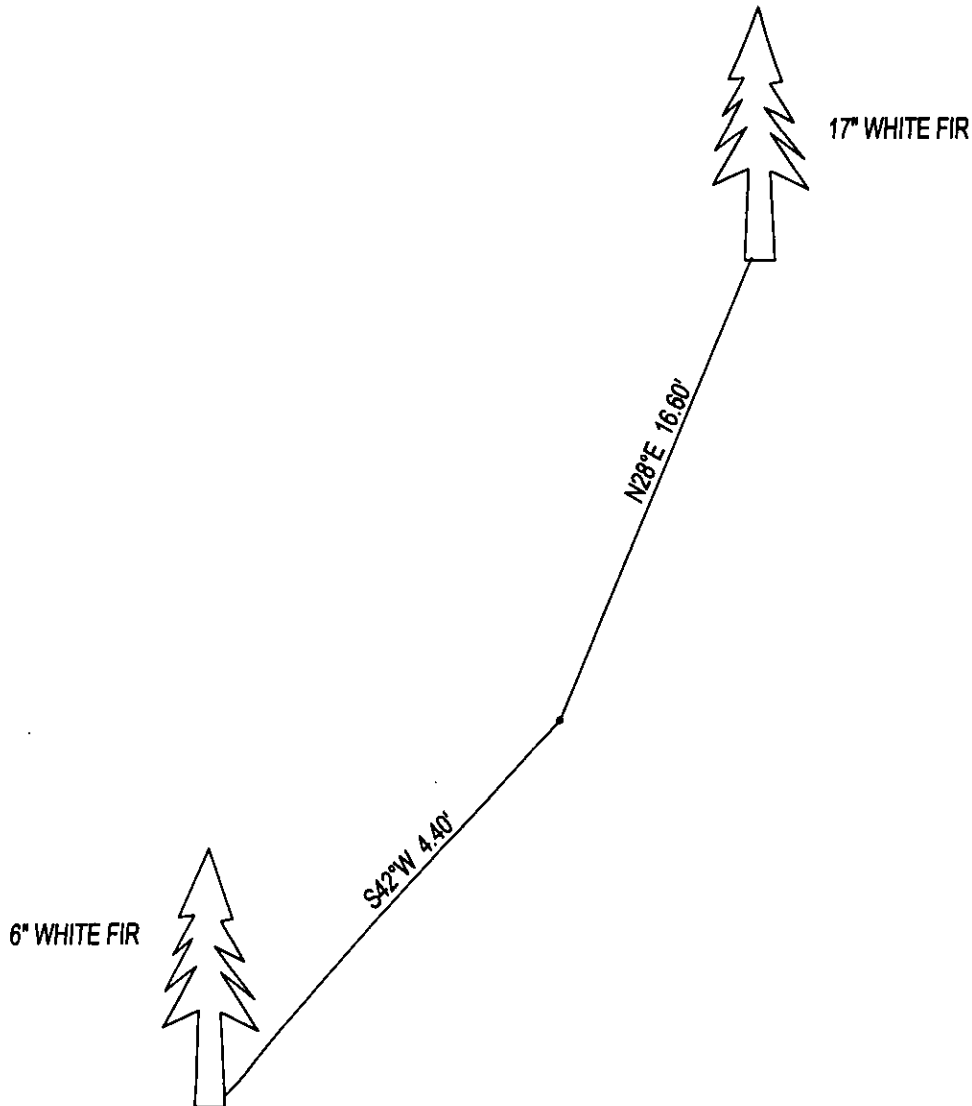


CERTIFIED CORNER RECORDATION

CORNER W1/4 CORNER SEC. 32 T. 34N , R. 31W , P.M.M., LINCOLN COUNTY

FOUND: 3 1/4" BLM BRASS CAP IN A MOUND OF STONE STAMPED AS SHOWN, FROM WHICH;
17" WHITE FIR BEARS N28°E 16.60' WITH OVERGROWN SCRIBE.
6" WHITE FIR BEARS S42°W 4.40' WITH VISIBLE SCRIBE.

MAINTENANCE: REMOVED BRUSH AND TREE LIMBS FROM CORNER AREA AND SET STEEL POSTS
NORTH 1 FEET AND EAST 1 FEET FROM CORNER, PAINTED RED BANDS AND SCRIBE AREA ON
ALL BEARING TREES.



SKETCH OF CORNER

CERTIFICATION

I, DAN CROFT
CERTIFY THE INFORMATION SHOWN HEREIN IS TRUE AND CORRECT.

SIGNATURE GROUND PARTY CHIEF

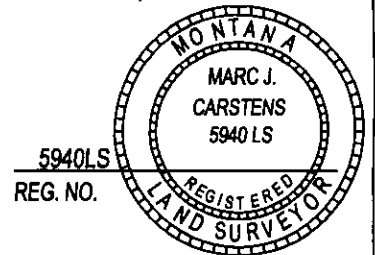
I, MARC J. CARSTENS
CERTIFY THAT THIS CORNER RECORD CORRECTLY REPRESENTS WORK
PERFORMED BY ME OR UNDER MY DIRECTION IN COMPLIANCE WITH THE
"CORNER RECORDATION ACT" (70-22-101, ET SEQ., M.C.A.)

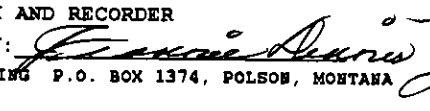

SIGNATURE OF SURVEYOR & SEAL

07-15-14

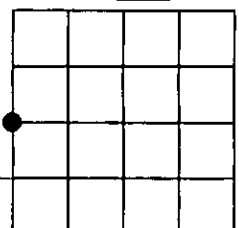
DATE

CARSTENS SURVEYING
EMPLOYER



OFFICE OF CLERK AND RECORDER, COUNTY OF LINCOLN
THIS "CORNER RECORD" WAS FILED FOR STATE OF MONTANA LINCOLN COUNTY
AND IS ASSIGNED PAGE NO. 252391 BOOK: CCR CC&R'S PAGE: 12127 Pages: 1
RECORDED: 07/18/2014 9:55 KOI: CC&R'S
TAMMY D. LAUER CLERK AND RECORDER
FEE: \$0.00 BY: 
FOR: CARSTENS LAND SURVEYING P.O. BOX 1374, POLSON, MONTANA
COUNTY OFFICIAL
CROSS INDEX NO. X-5 T. 34N , R. 31W , P.M.M.
ADOPTED JULY 1, 1981, MONTANA BOARD OF PROFESSIONAL ENGINEERS & LAND SURVEYORS

SEC. 32



● CORNER THIS SHEET