

CERTIFIED LAND CORNER RECORDATION

Cor. 11, 12, 14, 13, Twp.34N, R29W

Original DESCRIPTION OF CORNER EVIDENCE FOUND, AND ORIGINAL RECORD (IF KNOWN)
1912 GLO Notes, Vol. 6501, Page 9, T34N,R29W, Lincoln County, Montana
Cor. Desc. 20" Pine Mkd. T34N,S12 on NE, R29W S13 on SE, S14 on SW and
S11 on NW side W/4 notches on S and 1 on E.
14" Pine bears N32°W, 51 lks, Mkd. T34N,R29W,S11BT, 18" Pine bears N52°E,
50 lks, Mkd. T34N,R29W,S12 BT, 18" Pine bears S45°, 45 lks, Mkd. T34N,
R29W,S14 BT, 16" Pine bears S31°30'E, 45 lks, Mkd. T34N,R29W,S13 BT
Found: The reported 20" Pine which is now a 22" Pine-blazed on 4 sides
and marked as reported except SW scribing has been chopped out. Remainder
of scribing partly overgrown but decipherable. 4 BTs live and growing-
markings all partly overgrown but identifiable. All BTs Mkd. as reported.

DESCRIPTION OF MONUMENT AND ACCESSORIES ESTABLISHED TO PERPETUATE THE ORIGINAL LOCATION OF THIS CORNER:

Date of work: 27/6/66

We tagged all BTs with Std. FS BT signs
Brass Cap Mkd. WC

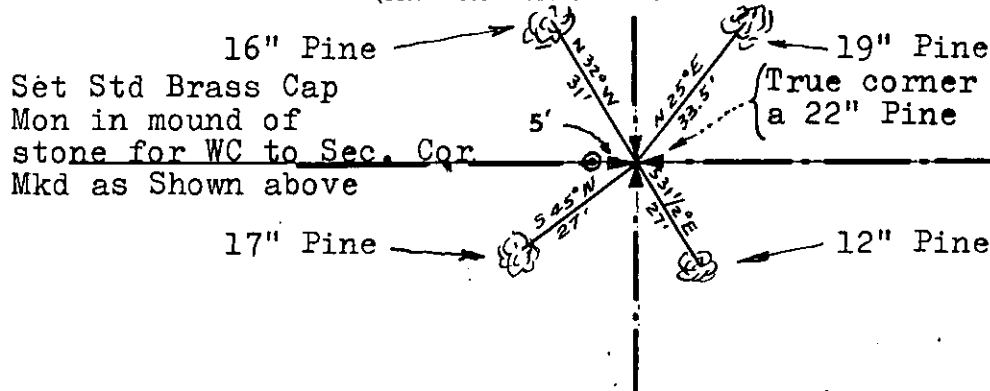
Cor. 5' E
11 | 12
14 | 13

**Note: Monument set is
Witness Corner**

T34N R29W 1966

Set Std. Brass Cap Monument in mound of stone for WC to Sec. Cor.
Mkd as shown above.

SKETCH, WITH COURSE AND DISTANCE TO ADJACENT CORNERS IF DETERMINED IN THIS SURVEY. (MAY SKETCH OR PASTE REPRODUCTION ON REVERSE SIDE.)



NOTE: Bearing trees partly overgrown but decipherable. Evidently marked as reported above.
We did not chop out the old blazes.

TWP. 34 N., R. 29 W., M.P.M.

Surveyor's Seal

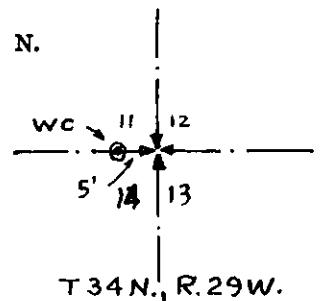
I, Jack Ninneman
certify that the information shown herein is true and correct.

Jack Ninneman
Signature of Ground Party Chief

I, Jack W. Ninneman
certify that I have carefully performed or reviewed the work done on the diagrammed corner as reported on this recordation form and approve the same.

Jack W. Ninneman
Signature of Surveyor

DIAGRAM OF CORNER:



⊙ = Corner recorded on the sheet

Montana 534 ES
Registration Number

Office of Clerk and Recorder, County of Lincoln

This "corner record" was filed for record on the 5th day of January 1967, was noted on the cross-index plat and is

assigned page No. 70, in book No. 1

ELEANOR L. VAUGHN, By: *Hester Ninneman*
County Official Deputy.



STATE OF MONTANA
COUNTY OF LINCOLN
Filed this 5th day of
January A. D. 1917
at Helena M.
William H. Winters
County Clerk.
Wm. H. Winters
Deputy