

CERTIFIED LAND CORNER RECORDATION

1/4 Corner for Sections 22 and 27 of Twp. 34 N., R. 29 W., M.P.M.

Original DESCRIPTION OF CORNER EVIDENCE FOUND, AND ORIGINAL RECORD (IF KNOWN)
 1912 GLO Vol. 6501 Page 34 Twp. 34N R 29W Lincoln County, Mont.
 GLO Desc. Slatestone 18"x10"x5", 12 " in grd. Mkd. 1/4 on N Face
 10" pine bears N8°W, 21 lks, mkd. 1/4 S 22 BT
 10" pine bears S 40°E 3.5 Ft.mrkd 1/4 S 27 BT
 18" Tamarack bears S 25°W, 31 lks, mrkd. 1/4 S 27 BT

Found original stone marked as reported- Bearings to BTs are
 confused-North Bt Bears N18°W 14 Ft-mrkd. as reported
 South Bt Bears S 19°W 20 Ft. (dead)

DESCRIPTION OF MONUMENT AND ACCESSORIES ESTABLISHED TO PERPETUATE THE ORIGINAL LOCATION OF THIS CORNER:

Date of work: 20/9/1966

We set a Std Brass Cap mkd. 1/4 S ~~27~~²²
 1966

We scribed a new BT which A 10" pine bears S 40°E 3 1/2 Ft. Mkd 1/4 S 22 BT
 Tagged with Std. BT Tag
 T34N., R.29W
 Original 10" pine bears N18°W 14'
 10" Pine bears S40°E 3.5'
 Original 18" Dead Larch bears S19°W 20'

SKETCH, WITH COURSE AND DISTANCE TO ADJACENT CORNERS IF DETERMINED IN THIS SURVEY.
 (MAY SKETCH OR PASTE REPRODUCTION ON REVERSE SIDE.)

~ See other side ~

Surveyor's Seal

I, Jack Ninneman
 certify that the information shown herein is true and
 correct.

Jack Ninneman
 Signature of Ground Party Chief

I, Jack Ninneman
 certify that I have carefully performed or reviewed the
 work done on the diagrammed corner as reported on this
 recordation form and approve the same.

Jack Ninneman
 Signature of Surveyor

DIAGRAM OF CORNER:

N.

22
 27
 T. 34 N., R. 29 W.

✂ = Corner recorded on the sheet

Mont. 534 ES
 Registration Number

Office of Clerk and Recorder, County of Lincoln

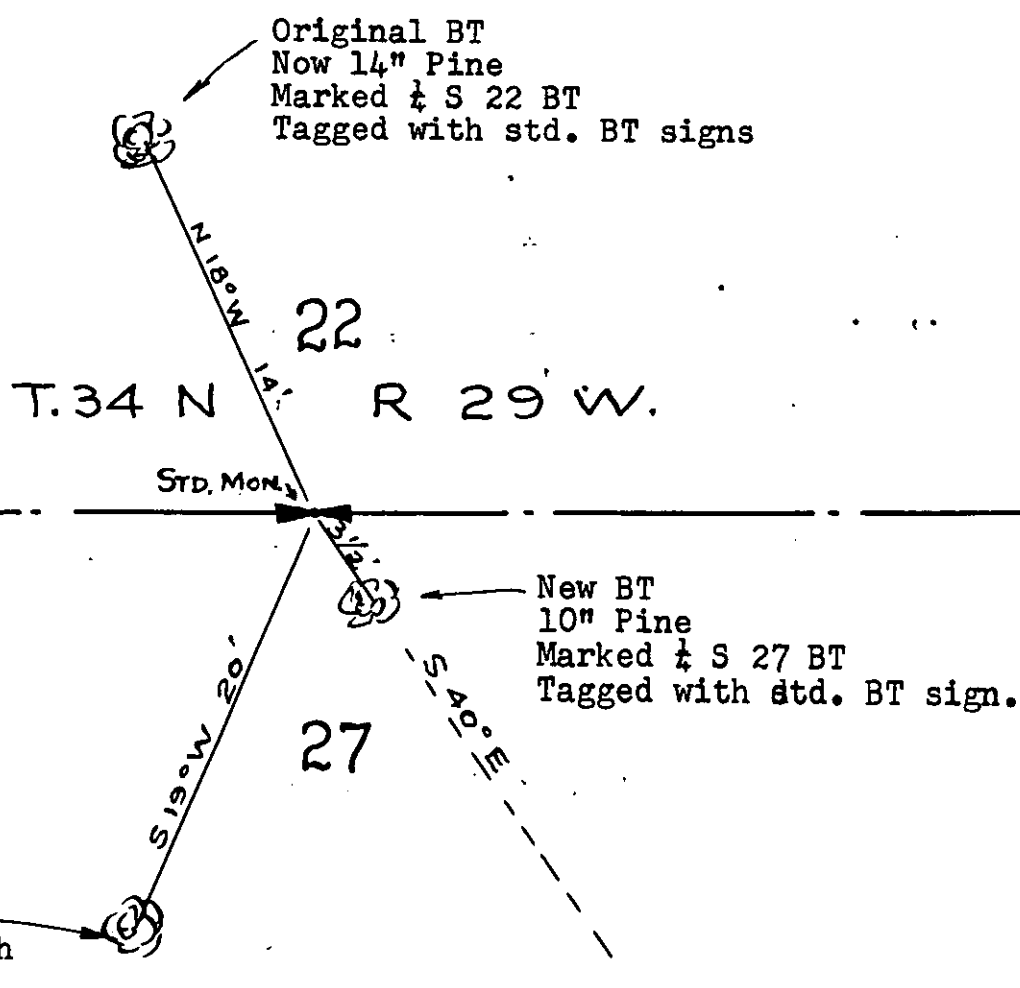
This "corner record" was filed for record on the 5th day of January 1967, was noted on the cross-index plat and is

assigned page No. 63, in book No. 1

ELEANOR L. VAUGHN, By: *Nelda Hayden*
 County Official Deputy.

We set a standard brass capped monument marked thus:
 in a mound of stone; placed original
 stone alongside.

$\frac{1}{4} \frac{22}{27}$
 1966



STATE OF MONTANA
 COUNTY OF LINCOLN
 Filed this 5th day of January
1967
 By Edmund G. Hughes County Clerk
Wm. H. Anderson Deputy

