

CERTIFIED LAND CORNER RECORDATION

1/4 Corner between Secs. $\frac{26}{35}$ Twp. 34 N., R. 29 W., M.P.M.

Original DESCRIPTION OF CORNER EVIDENCE FOUND, AND ORIGINAL RECORD (IF KNOWN)
 1912 GLO Notes Vol. 6501 Page 15 T34N R 29W Lincoln County, Mont.
 Corner Desc. Slatestone 18"x8"x5" 12" in grd. mkd. 1/4 on N. Face
 Witness marks: 8" Fir bears N85°W, 54 lks, mkd. 1/4 S 26 BT
 12" Pine bears S 40°E, 25 lks. mkd. 1/4 S 35 BT

Found
 South BT only-this tree live and healthy now 19" dia.
 Exhaustive search failed to disclose stone or W BT
 This corner falls between series of small ledges, in natural clearing.

DESCRIPTION OF MONUMENT AND ACCESSORIES ESTABLISHED TO PERPETUATE THE ORIGINAL LOCATION OF THIS CORNER:

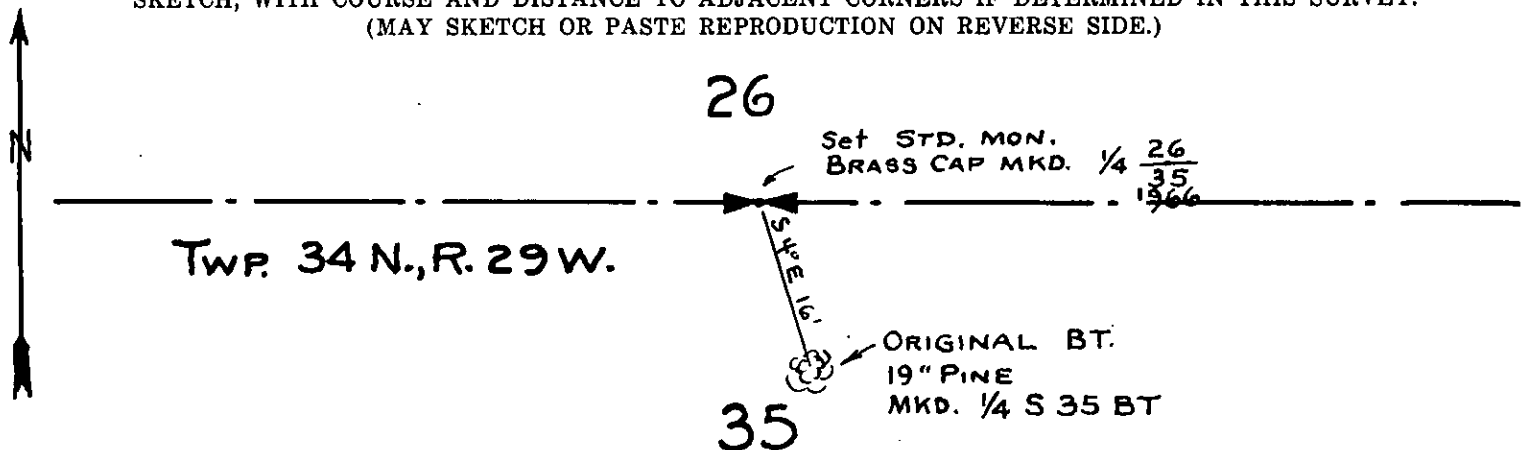
Date of work: 23/6/1966

Set a Std. 2" Pipe 30" long with Brass Cap, 14" inches in ground with mound of stone to top

Marked 1/4 $\frac{26}{35}$ Tagged witness tree with Std. BLM BT sign
 No other trees in limits
 1966 (Guess mosquitoes carried them off)

19" Pine bears S 40°E, 16'
 Original BT marked 1/4 S 35 BT

SKETCH, WITH COURSE AND DISTANCE TO ADJACENT CORNERS IF DETERMINED IN THIS SURVEY.
 (MAY SKETCH OR PASTE REPRODUCTION ON REVERSE SIDE.)



Surveyor's Seal

I, Jack Ninneman
 certify that the information shown herein is true and correct.

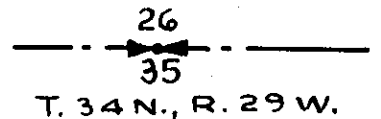
Jack Ninneman
 Signature of Ground Party Chief

I, Jack Ninneman
 certify that I have carefully performed or reviewed the work done on the diagrammed corner as reported on this recordation form and approve the same.

Jack Ninneman
 Signature of Surveyor

DIAGRAM OF CORNER:

N.



— = Corner recorded on the sheet

Mont. 534 ES
 Registration Number

Office of Clerk and Recorder, County of Lincoln

This "corner record" was filed for record on the 5th day of January 1967, was noted on the cross-index plat and is assigned page No. 61, in book No. 1

ELEANOR L. VAUGHN, By: *Eleanor L. Vaughn*
 County Official Deputy.



STATE OF MONTANA
COUNTY OF LINCOLN
Filed this 5th day of January
at 2:12 P.M. A.D. 1967
By William H. Watson Deputy
County Clerk