

# CERTIFIED LAND CORNER RECORDATION

Corner ~~3,2,3,4N~~, 3,2, ~~3,4N~~, R 29W

Original DESCRIPTION OF CORNER EVIDENCE FOUND, AND ORIGINAL RECORD (IF KNOWN)  
 1912 GLO Notes, Vol. 6498, Page 29 T35N, 34N R 29W Lincoln County, Montana  
 Cor. Desc. Limestone 16"x8"x8" 11" in grd., mkd W/2 Notches on E &  
 4 notches on W edge  
 Witness marks: 6" Pine bears N32 $\frac{1}{2}$ °W 20 lks, mkd. T35N,R29W, S34 BT  
 20" Pine bears N42 $\frac{1}{2}$ °E, 15 lks, mkd. T35N,R29W, S35 BT  
 8" Pine bears S 23°, 70 lks, mkd. T34N,R29W,S3 BT  
 6" Pine bears S 72°, 68 lks, mkd T34N, R29W, S2 BT  
 Found stone marked as described, NE BT marks erased 1930 confirms position,  
 NW BT reported erased entire ly overgrown, 8" Pine reported S23°W 70 lks is  
 a Larch marked T34 NR29W S 3 BT, 23" Pine S56°W Blazed but no marks legible.  
 1930 RESURVEY MARKS ERASED FROM NW AND NE BTs. THIS CORNER NOW APPLIES  
 ONLY TO SECTIONS 2 AND 3.

## DESCRIPTION OF MONUMENT AND ACCESSORIES ESTABLISHED TO PERPETUATE THE ORIGINAL LOCATION OF THIS CORNER:

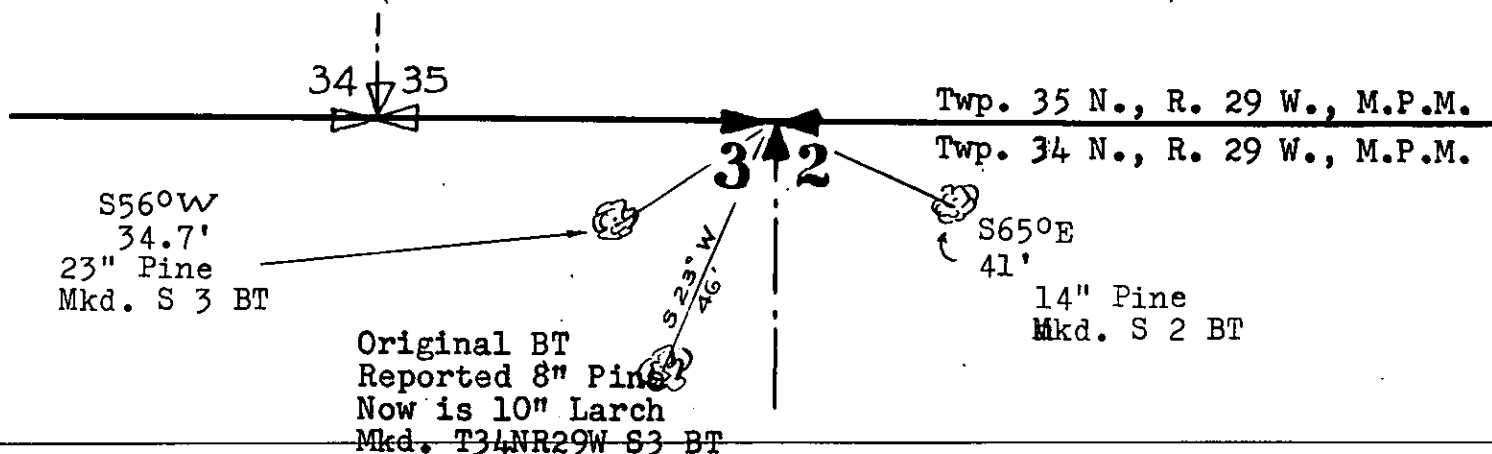
Date of work: 14/7/66

We set a 2" pipe with a brass cap marked T35N R29W

3 | 2  
T34N R29W  
1966

We blazed the 23" Pine facing corner. BT bears S56°W 34.7' mkd. S3BT  
 A Pine 14" in dia. bears S65°E 41' mkd. S 2BT (previously blazed but  
 no marks legible.  
 We tagged with Std. FS BT signs.

## SKETCH, WITH COURSE AND DISTANCE TO ADJACENT CORNERS IF DETERMINED IN THIS SURVEY. (MAY SKETCH OR PASTE REPRODUCTION ON REVERSE SIDE.)



Surveyor's Seal

Jack Ninneman

I, \_\_\_\_\_  
 certify that the information shown herein is true and  
 correct.

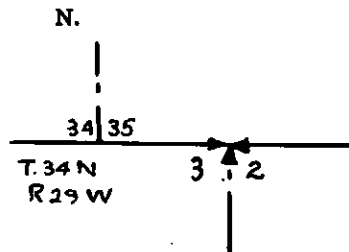
*Jack Ninneman*  
 Signature of Ground Party Chief

Jack Ninneman

I, \_\_\_\_\_  
 certify that I have carefully performed or reviewed the  
 work done on the diagrammed corner as reported on this  
 recordation form and approve the same.

*Jack Ninneman*  
 Signature of Surveyor

## DIAGRAM OF CORNER:



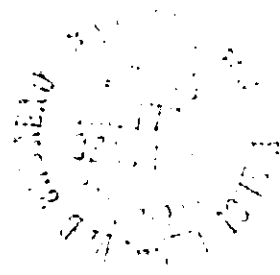
✕ = Corner recorded on the sheet

Montana 534 ES  
 Registration Number

Office of Clerk and Recorder, County of Lincoln

This "corner record" was filed for record on the 5th day of January 19.67, was noted on the cross-index plat and is  
 assigned page No. 60, in book No. 1

ELEANOR L. VAUGHN, By: *Verda Higdon*  
 County Official Deputy.



STATE OF MONTANA  
COUNTY OF LINCOLN  
Filed this 5th day of January  
1967  
at 2:10 P. M.  
By Charles F. Haughey Clerk  
Wm. H. Hutton Deputy