

# CONFIRMED LAND CORNER RECORD

1/4 Corner 3/2 T34N, R29W Lincoln County, Montana

## DESCRIPTION OF CORNER EVIDENCE FOUND, AND ORIGINAL RECORD (IF KNOWN)

✓ Original

1912 GLO Notes Vol. 6501 Page 30

Corner Description: A slatestone 16" x 16" x 4", 11" in Grd., MKD 1/4 on W. face

Witness Marks: 20" Pine, Bears S88°W, 24 LKS, MKD 1/4 S3BT  
18" Pine, Bears S57°E, 37 LKS, MKD 1/4 S2BT

Found: Slatestone as described was found & MKD 1/4 on W. Face.  
A 24" pine stump bearing S88°W was recovered at a distant of 15' with no markings.  
A 12" pine snag bearing S38°W was recovered at a distant of 15.5' MKD 1 HES 1038 BT.

1/4 Corner 3/2 T34N, R29W

## DESCRIPTION OF MONUMENT AND ACCESSORIES ESTABLISHED TO PERPETUATE THE ORIGINAL LOCATION OF THIS CORNER:

✓ Stone recovered was removed and placed in bottom of a 2 1/2' + hole.  
A 2" pipe with brass cap was placed in hole on top of stone. Top of BC was left protruding 8" + above ground.  
BC was stamped: (T34N R29W)  
( 3/2 )  
( 1963 CE )

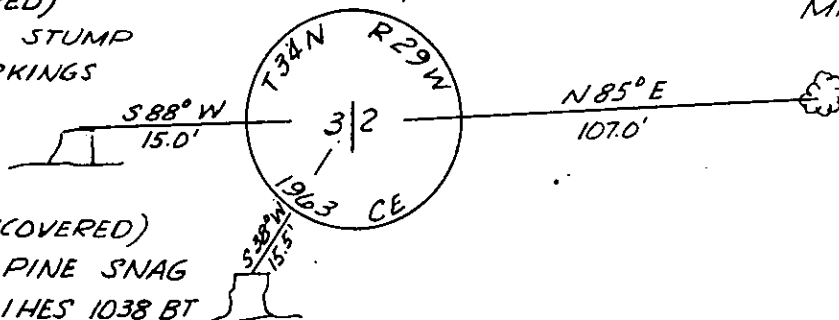
Date of work: 11 Sept. 1963

A 12" pine tree bearing N85E, for a distant of 107' was blazed and scribed F.S./R.M.

## SKETCH, WITH COURSE AND DISTANCE TO ADJACENT CORNERS IF DETERMINED IN THIS SURVEY. (MAY SKETCH OR PASTE REPRODUCTION ON REVERSE SIDE.)

(RECOVERED)  
24" PINE STUMP  
NO MARKINGS

(RECOVERED)  
12" PINE SNAG  
MKD 1 HES 1038 BT



(MKD BY THIS PARTY)  
12" PINE  
MKD. FS/RM.

Surveyor's Seal



I, Laverne L. Estes  
certify that the information shown herein is true and correct.

*Laverne L. Estes*  
Signature of Ground Party Chief

I, Laverne L. Estes  
certify that I have carefully performed or reviewed the work done on the diagrammed corner as reported on this recordation form and approve the same.

*Laverne L. Estes*  
Signature of Surveyor

DIAGRAM OF CORNER:

N.

3/2

A STD BC stamped:  
T34N R29W  
3/2  
1963 CE

was set for true corner  
= Corner recorded on the sheet

Registration Number

Office of Clerk and Recorder, County of Lincoln

This "corner record" was filed for record on the 13th. day of May 1968, was noted on the cross-index plat and is

assigned page No. 107, in book No. 1

ELEANOR L. VAUGHN, *Mae Watson*  
County Official Deputy.

FORM 125-41605

Cross Index No. C-17 T 34 R 29 Mer.