

# CERTIFIED CORNER RECORDATION

Corner S 1/4 Sec. 3 T. 34N R. 27W P.M., MT Lincoln County

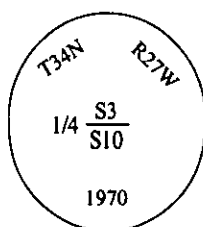
I. 1911 G.L.O. original record by William C. Perkins: Set a shale stone, 14x8x6 ins., 10 ins. in the ground, for 1/4 sec. cor., mkd. 1/4 on N. face, and 2 bearing trees.

1970 B.L.M. remonumentation record by Joseph E. French: The 1/4 cor. of sec's. 3 and 10, identical with Cor. No. 1 of Homestead Entry Survey No. 1171, monumented with a shale stone, 14x8x6 ins., firmly set, mkd. 1/4 on N. face, and witnessed by the original bearing trees:

A matured spruce, 30 ins. diam., bears S50°W, 9 lks. dist., with an overgrown blaze. (rec.: S30°W)

A matured spruce, 25 ins. diam., bears N40°W, 8 lks. dist., with an overgrown blaze. (rec.: N22°W)

At the corner point, set an iron post, 30 ins. long, 2 1/2 ins. diam., 24 ins. in the ground with brass cap mkd.:



Established two new bearing trees:

A spruce, 6 ins. diam., bears S55 1/2°E, 58 lks. dist., mkd "1/4 S10 BT".

A fir, 10 ins. diam., bears N11 1/2°W, 27 lks. dist., mkd "1/4 S3 BT".

bury the orig. stone alongside iron post.

II. Found a 2 1/2 in. diam. iron post, buried out of position, with a 3 1/4 in. diam. B.L.M. brass cap, mkd as shown above; from which:

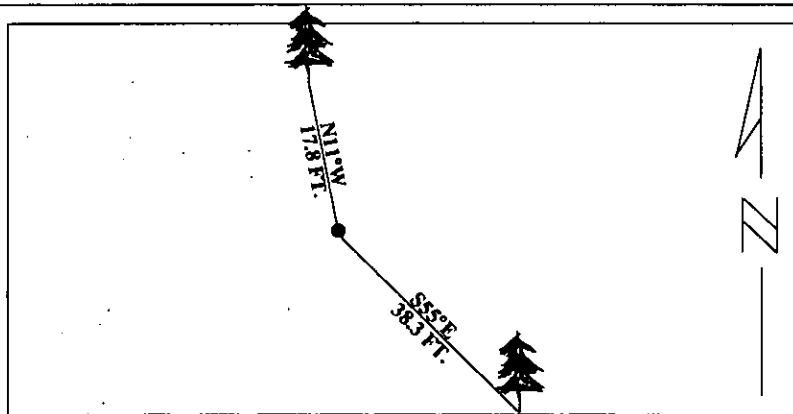
A spruce, 16 ins. diam., bears S55°E, 38.3 ft. (58 lks.) dist., with a healed face. (B.L.M.)

A fir, 16 ins. diam., bears N11°W, 17.8 ft. (27 lks.) dist., mkd. "1/4 S3 BT". (B.L.M.)

III. At the position determined by a distance-distance intersection from found B.L.M. BT's, reset the B.L.M. brass monument, 22 ins. in the ground, in a collar of stone. During site excavation the orig. corner stone was discovered. We reburied it next to the iron post.

Painted red bands around the bearing trees and attached Land Survey Monument and Bearing Tree signs.

Magnetic Declination: 20° East



SKETCH OF CORNER

CERTIFICATION

I, Thomas M. Hommel  
certify the information shown herein is true and correct.

Thomas M. Hommel  
Signature Ground Party Chief

I, Alvah F. Hughes  
certify that this Corner Record correctly represents work performed by me or under my direction in compliance with the "Corner Recordation Act" (70-22-101, et seq., M.C.A.)

Alvah F. Hughes  
Signature of Surveyor & Seal

Date: 1/8/96

Reg. No.: 7322LS

Employer: U.S. FOREST SERVICE

Office of Clerk and Recorder, County of LINCOLN. This "corner record" was filed for record on JULY 29, 1997 was noted on the cross-index plat and is assigned page No. 9792 in book No. \_\_\_\_\_

CORAL M. CUMMINGS  
County Official

