

CERTIFIED CORNER RECORDATION

Corner 1/4 Sec. 11&14 T. 34N R. 27W P.M., MT Lincoln County

- I. 1912 G.L.O. Original Record by William C. Perkins: Set a shale stone, 14x6x6 ins., 10 ins. in the ground, for 1/4 sec. cor., mkd. "1/4" on the N. face..

Established two bearing trees:

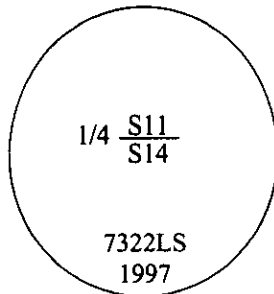
A larch, 18 ins. diam., bears N33°E, 11 lks. dist., mkd. "1/4 S11 BT".
A larch, 8 ins. diam., bears S41°E, 15 lks. dist., mkd. "1/4 S14 BT".

- II. Found a 4x8 in. shale stone, protruding 4 ins. above the ground, firmly set, mkd. "1/4" on the N. face.

from which:

A larch, 19 ins. diam., bears N33°E, 7.3 ft. dist., mkd. "1/4 S11 BT".
A larch, 15 ins. diam., bears S41°E, 9.9 ft. dist., with a healed face.

- III. At the corner position, set a 30 ins. long aluminum pipe, 2 1/2 in. diam., 26 ins. in the ground, with a 3 1/2 in. diam. aluminum cap mkd. as shown.



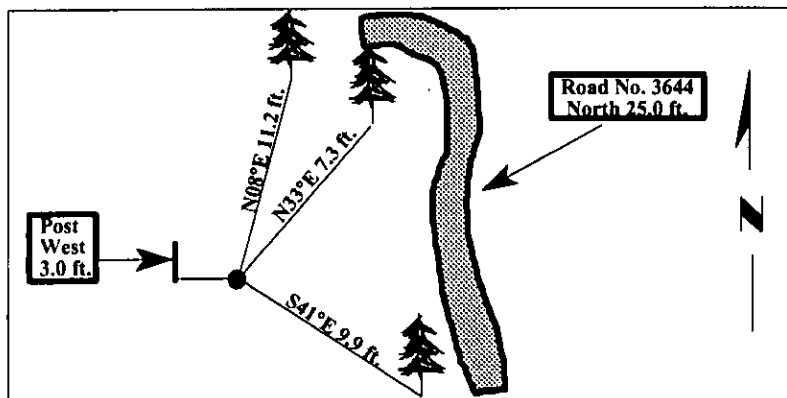
Established one new bearing tree and set one steel witness post:

A fir, 14 ins. diam., bears N08°E, 11.2 ft. dist., mkd. "1/4 S11 BT".
A 6 ft. steel witness post, West, 3.0 ft. dist. of the corner.

*Road No. 3644, bears North, 25.0 ft. dist. of the corner.

Painted bearing trees and attached Land Survey Monument and Bearing Tree signs.
Attached a Land Survey Monument decal to the post.

Magnetic Declination: 20° East.



SKETCH OF CORNER

CERTIFICATION:

I, Rex O. Rice
certify the information shown herein is true and correct.

Rex O. Rice

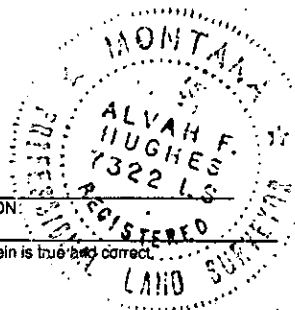
I, Alvah F. Hughes
certify that this Corner Record correctly represents work performed by me or under my direction in compliance with the "Corner Recordation Act" (70-22-101, et seq., M.C.A.)

Alvah F. Hughes
Signature of Surveyor & Seal

Date: 09/05/97

Reg. No.: 7322LS

Employer: U.S. FOREST SERVICE



Office of Clerk and Recorder, County of Lincoln. This "corner record" was filed for record on 12-26-97 was noted on the cross-index plat and is assigned page No. 10029 in book No. _____

Coral M. Cummings Byrds
County Official

