

CERTIFIED CORNER RECORDATION

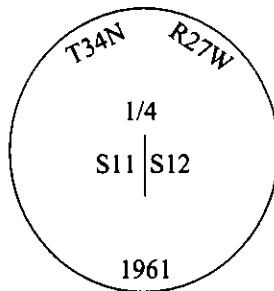
Corner 1/4 Sec. 11&12 T. 34N R. 27W P.M., MT Lincoln County

- I. 1912 G.L.O. Original Record by William C. Perkins: Set a shale stone, 16x10x5 ins., 11 ins. in the ground, for 1/4 sec. cor., mkd. "1/4" on the W. face..

Established two bearing trees:

- A larch, 12 ins. diam., bears N57°E, 15 lks. dist., mkd. "1/4 S12 BT".
A pine, 10 ins. diam., bears S58°W, 50 lks. dist., mkd. "1/4 S11 BT".

1961 B.L.M. Remonumentation Record by David R. Cunningham et. al.: The 1/4 sec. cor. of secs. 11 and 12, monumented with a shale stone, 15x10x5 ins., firmly set and mkd. "1/4" on the W. face, and witnessed by the remains of the original bearing trees. At the corner point, set an iron post, 30 ins. long, 2 1/2 ins. diam., 26 ins. in the ground, with a brass cap mkd. as shown.



Established two new bearing trees and bury the original stone alongside of the iron post.

- II. Found a leaning 2 1/2 in. diam. x 30 ins. long iron pipe, with a brass cap, mkd. as shwon. No evidence of the original bearing trees.

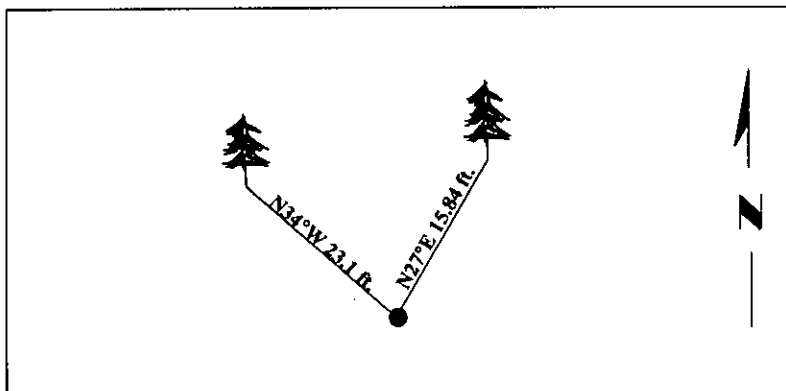
from which:

- A larch, 10 ins. diam., bears N27°E, 15.84 ft. dist., with a healed face. (BLM-record)
A larch, 15 ins. diam., bears N34°W, 23.1 ft. dist., with a healed face. (BLM-record)

- III. Reset the found iron pipe, by distances-distance intersection from the B.L.M. bearing trees, 26 ins. in the ground, surrounded with a small collar of stone.

Painted bearing trees and attached Land Survey Monument and Bearing Tree signs.

Magnetic Declination: 20° East.



SKETCH OF CORNER

CERTIFICATION

I, Rex O. Rice
certify the information shown herein is true and correct.

Rex O. Rice

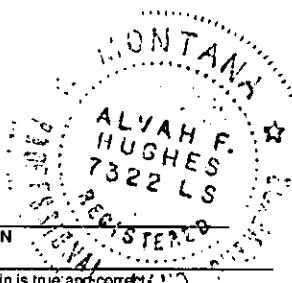
I, Alvah F. Hughes
certify that this Corner Record correctly represents work performed by me or under my direction in compliance with the "Corner Recordation Act" (70-22-101, et seq., M.C.A.)

Alvah F. Hughes
Signature of Surveyor & Seal

Date: 08/27/97

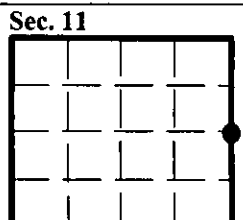
Reg. No.: 7322LS

Employer: U.S. FOREST SERVICE



Office of Clerk and Recorder, County of Lincoln. This "corner record" was filed for record on 12-26-97 was noted on the cross-index plat and is assigned page No. 10028 in book No. _____

David M. Cunningham
County Official



● - corner this sheet

Cross Index No. G-21 T. 34N R. 27W P.M., MT