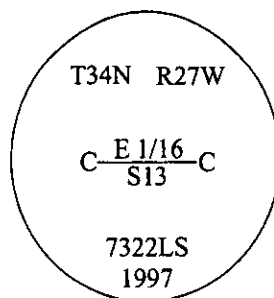


CERTIFIED CORNER RECORDATION

Corner CE 1/16 Sec. 13 T. 34N R. 27W P.M., MT Lincoln County

- I. No previous history.
- II. No evidence found.
- II. Set by survey, a 30 ins. long aluminum pipe, 2 1/2 in. diam., 24 ins. in the ground, with a 3 1/4 in. diam. aluminum cap, surrounded with a small rock collar, mkd. as shown.

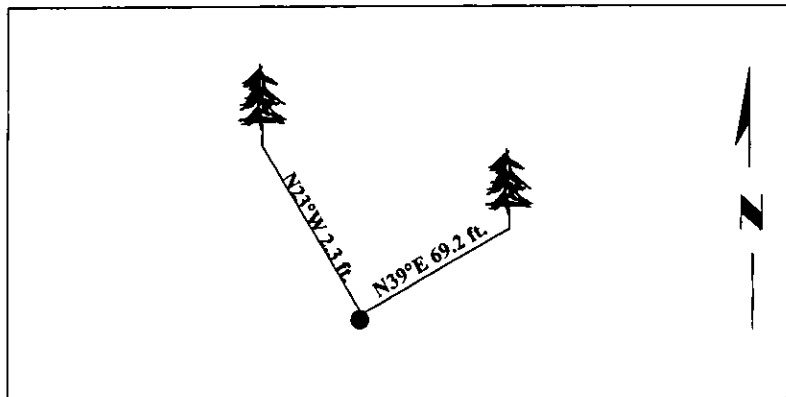


Established two new bearing trees:

- A larch, 24 ins. diam., bears N39°E, 69.2 ft. dist., mkd. "CE 1/16 S13 BT".
- A larch, 3 ins. diam., bears N23°W, 2.3 ft. dist., mkd. "X" "BT".
- A 6 ft. galvanized steel guard post, bears East, 3.0 ft. dist.

Painted bearing trees and attached Land Survey Monument and Bearing Tree signs.
Attached Land Survey Monument and Property Boundary decals to the post.

Magnetic Declination: 20° East.



SKETCH OF CORNER

CERTIFICATION

I, Mark Federman
certify the information shown herein is true and correct.

Mark Federman

I, Alvah F. Hughes
certify that this Corner Record correctly represents work performed by me or under my direction in compliance with the "Corner Recordation Act" (70-22-101 et seq., M.C.A.).

Alvah F. Hughes
Signature of Surveyor & Seal

Date: 10/21/97

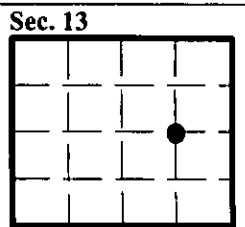
Reg. No.: 7322LS

Employer: U.S. FOREST SERVICE

ALVAH F. HUGHES
7322LS
REGISTERED

Office of Clerk and Recorder, County of Lincoln. This "corner record" was filed for record on 12-26-97 was noted on the cross-index plat and is assigned page No. 10022 in book No. _____

Carol M. Cunningham, Esq.
County Official



• - corner this sheet

Cross Index No. L-24 T. 34N R. 27W P.M., MT