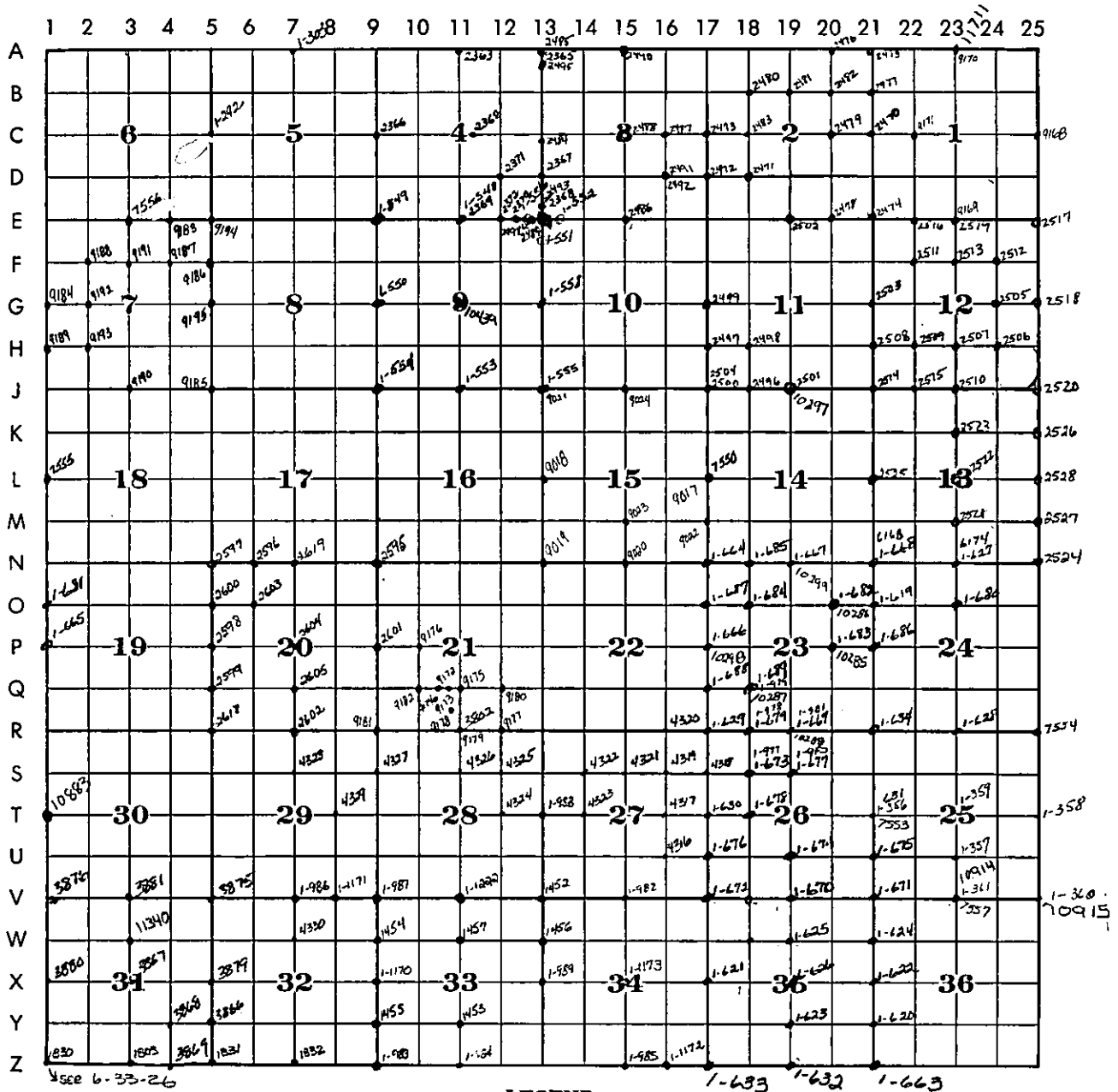
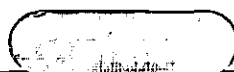


CROSS INDEX PLAT

T. 34 R. 26 MER.





CROSS INDEX PLAT

T. 34 R. 26 MER.

	1	2	3	4	5	6	7	8	9	10	11	12	13	14	15	16	17	18	19	20	21	22	23	24	25
A																									
B																									
C			8				5				4				3				2					1	
D																									
E																									
F																									
G			7				8				9				10				11					12	
H																									
J																									
K																									
L			18				17				16				15				14					13	
M																									
N																									
O																									
P			19				20				21				22				23					24	
Q																									
R																									
S																									
T			30				29				28				27				26					25	
U																									
V																									
W																									
X			31				32				33				34				35					36	
Y																									
Z																									

LEGEND



Corners filed under this cross index plat.



Certificates filed in adjoining township as indicated by solid quadrant(s).

Each corner certificate is identified by an alphabetical-numerical coordinate number which is derived from the system shown on the township diagram. For example, the quarter-corner between Section 5 and 6 is identified as Corner C-5.

Corners such as meander corners or subdivision corners which are not located at intersecting lines on the above diagram will be identified by reference to the nearest applicable coordinate lines, thus:
AB-1; M-1-2; VW-19-20.

Corners common to adjoining townships will be identified by coordinates of the townships in which the certificates are to be filed.

Within each township record, the certificates will be filed in alphabetical-numerical sequence.

