

# CERTIFIED LAND CORNER RECORDATION

(REFERENCE FSM 7153.53)

## DESCRIPTION OF CORNER EVIDENCE FOUND, AND ORIGINAL RECORD (IF KNOWN)

Original G.L.O. record: Set a post, 3 ft. long, 3 ins. square, 24 ins. in the ground with "S" marked on N. face.

From which: A 6" pine bears N39°30'W., 35 lks. Marked: "1/4 S.B.T."

A 6" pine bears S71°W., 36 lks. Marked: "1/4 S.B.T."

No evidence of original monument and accessories found.

FOUND BRASS ROCK CAP STAMPED "5612 S" AS PER C of S #748 & 750 <sup>CORNER RECORDATION</sup> FORM, BK 1 Pg 669  
POSITION FOUND TO BE IN ERROR, REFER TO THE CORRECTION TO C of S #748 & 750

## DESCRIPTION OF MONUMENT AND ACCESSORIES ESTABLISHED TO PERPETUATE THE ORIGINAL LOCATION OF THIS CORNER:

At the corner point of the 1/4 S26: <sup>S23</sup> USING SINGLE PROPORTIONATE MEASUREMENT

Date of work: 10/22/80

Set a 2 1/2"x30" alum. pipe appr. 8" in ground with alum. cap marked as shown:  
 Collar of stone. ROCK CAIRN.

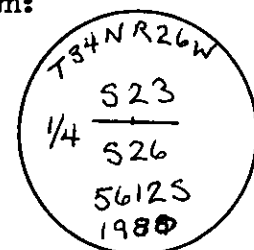
From which: A 8" larch bears S69°E., 31.2 ft. Marked: "1/4 S26 BT."

A 8" pine bears N29°W., 33.7 ft. Marked: "1/4 S23 BT."

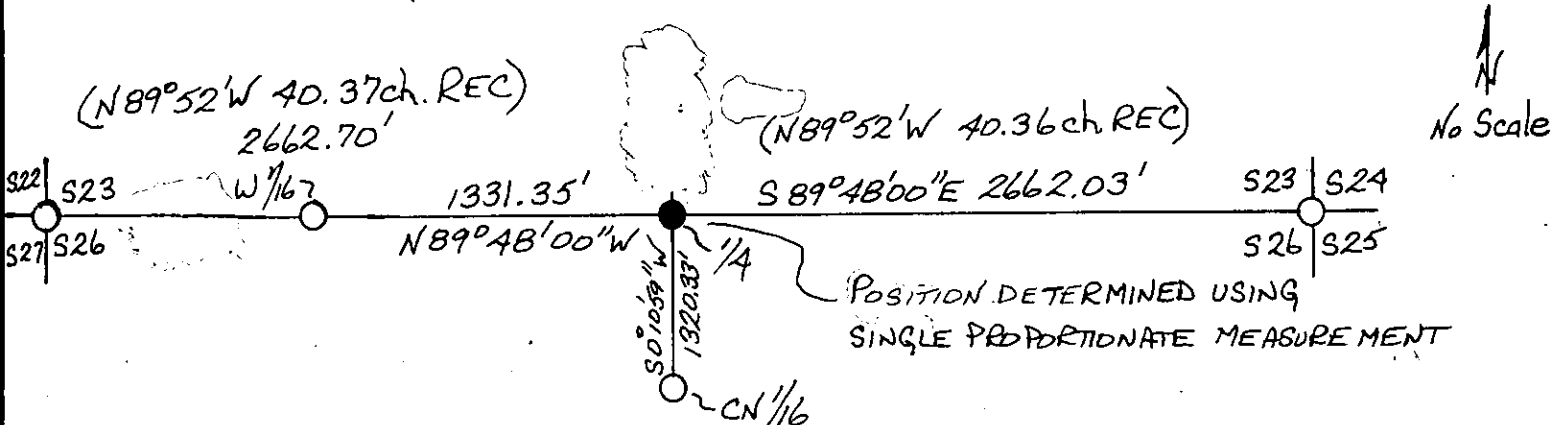
Attached location poster to a 3" larch which bears S36°W., 12.1 ft.

Attached bearing tree signs.

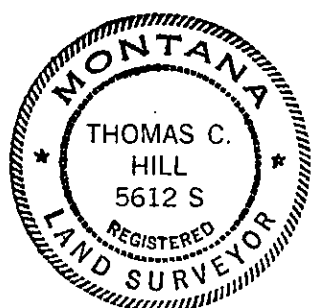
Painted red bands around bearing trees.



## SKETCH, WITH COURSE AND DISTANCE TO ADJACENT CORNERS IF DETERMINED IN THIS SURVEY. (MAY SKETCH OR PASTE REPRODUCTION ON REVERSE SIDE.)



Surveyor's Seal



I, Anthony J. Bachman  
 certify that the information shown herein is true and correct.

*Anthony J. Bachman*

Signature of Ground Party Chief

I, Thomas C. Hill  
 certify that I have carefully performed or reviewed the work done on the diagrammed corner as reported on this recordation form and approve the same.

*Thomas C. Hill*

Signature of Surveyor

## DIAGRAM OF CORNER:

T34N R26W  
 N. 1  
 SEC 23  
 1/4  
 SEC 26

● = Corner recorded on the sheet

5612 S  
 Registration Number

Office of Clerk and Recorder, County of Lincoln

This "corner record" was filed for record on the 4th day of February 1981, was noted on the cross-index plat and is assigned page No. 981, in book No. 1

*Eleanor L. Vaughn*, by *Michelle Groom*  
 County Official Deputy

Cross Index No. R-19 T. 34N R. 26W Mer.

... ..

... ..

... ..

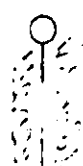
... ..

... ..

... ..

... ..

... ..



... ..

... ..

...

...

...

...

...

...

...