

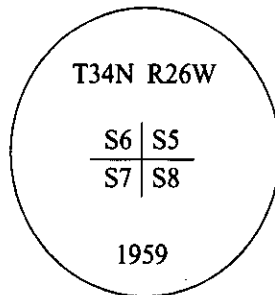
CERTIFIED CORNER RECORDATION

Corner Sec. Cor. Sec. 5, 6, 7, 8 T. 34N R. 26W P.M., MT Lincoln County

I. 1894 G.L.O. original record by Frank L. Siger and Abram L. Jaqueth: Set a stone and 4 bearing trees.

1959 B.L.M. remonumentation record by David R. Cunningham and William E. Stephens: The cor. of secs. 5, 6, 7, and 8, monumented with a limestone, 14 x 8 x 4 ins., firmly set and mkd. with 5 notches on the E. and S. edges, and witnessed by the remains of the original bearing trees.

At the corner point, set an iron post, 30 ins. long, 2 1/2 ins. diam., 26 ins. in the ground, in concrete, with a brass cap mkd:



from which, the remains of the original bearing trees:

- A fir, 16 ins. diam., bears N34 1/2°E, 23 lks. dist., with "34N R26 S5" visible.
- A larch, 13 ins. diam., bears S55 1/2°E, 34 lks. dist., with "T34N R26W S8 BT" visible.
- A stump, 15 ins. diam., bears S26 1/2°W, 11 lks. dist., with "T34N R26W S7 BT" visible.
- A fir, 15 ins. diam., bears N22 1/2°W, 39 lks. dist., with "T34N R26W S6 BT" visible.

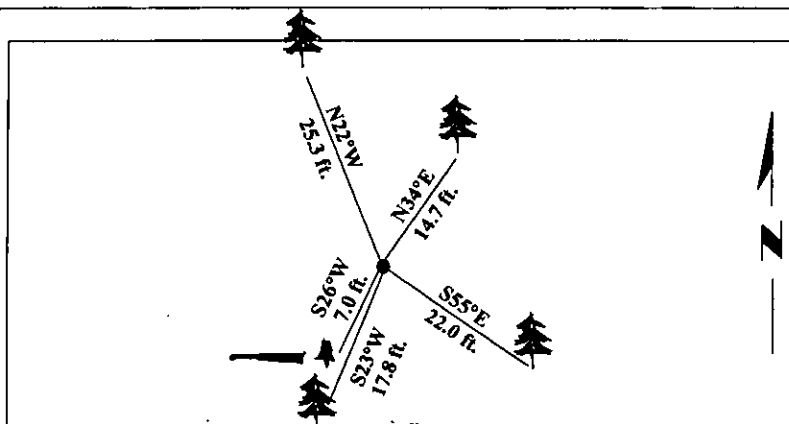
Buried the original stone alongside and raised a mound of stone, 2 ft. base, 1 1/2 ft. high, W. of the iron post.

Established 1 new bearing tree:

- A fir, 12 ins. diam., bears S23 3/4°W, 27 lks. dist., scribed "T34N R26W S7 BT".

- II. Found an iron post with a BLM brass cap, 5 ins. above ground, mkd. as shown above, from which,
- A fir, 19 ins. diam., bears N34°E, 14.7 ft. (22 lks.) dist., with visible scribing. (GLO)
 - A larch, 16 ins. diam., bears S55°E, 22.0 ft. (33 lks.) dist., with visible scribing. (GLO)
 - A fir, 14 ins. diam., bears S23°W, 17.8 ft. (27 lks.) dist., with healed face. (BLM)
 - A rotten stump with down log, bears S26°W, 7.0 ft. (11 lks.) dist., with visible scribing. (GLO)
 - A fir, 18 ins. diam., bears N22°W, 25.3 ft. (38 lks.) dist., with visible scribing. (GLO)
 - A mound of stone, W. of corner, 1.0 ft.

- III. Painted bearing trees and attached Land Survey Monument and Bearing Tree signs.
Magnetic Declination: 20° East.



SKETCH OF CORNER

CERTIFICATION

I, Mark Federman
certify the information shown herein is true and correct.

I, Alvah F. Hughes
certify that this Corner Record correctly represents work performed by me or under my direction in compliance with the "Corner Recordation Act" (70-22-101 et seq., M.C.A.)

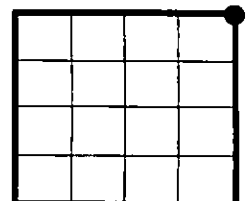
Alvah F. Hughes
Signature of Surveyor's Seal

Date: 12/27/96

Reg. No.: 7322LS

Employer: U.S. FOREST SERVICE

Sec. 7



• - corner this sheet

Office of Clerk and Recorder, County of LINCOLN. This "corner record" was filed for record on FEB 3, 1997 and was noted on the cross-index plat and is assigned page No. 9194, in book No. _____.

CORAL M. CUMMINGS
County Official

RECEIVED
FBI
JAN 10 1964
FBI
JAN 10 1964
FBI
JAN 10 1964

RECEIVED
FBI
JAN 10 1964