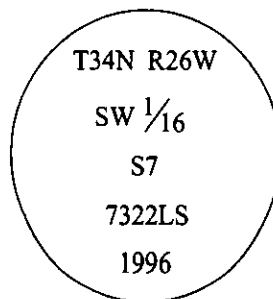


# CERTIFIED CORNER RECORDATION

Corner SW 1/16 Sec. 7 T. 34N R. 26W P.M., MT Lincoln County

- I. No previous history.
- II. Nothing found.
- III. At the position as determined by survey, set a 3/4 ins. diam., 30 ins. long alum. rod, with a 3 1/4 ins. diam. alum. cap, 5 ins. above ground, marked as shown:



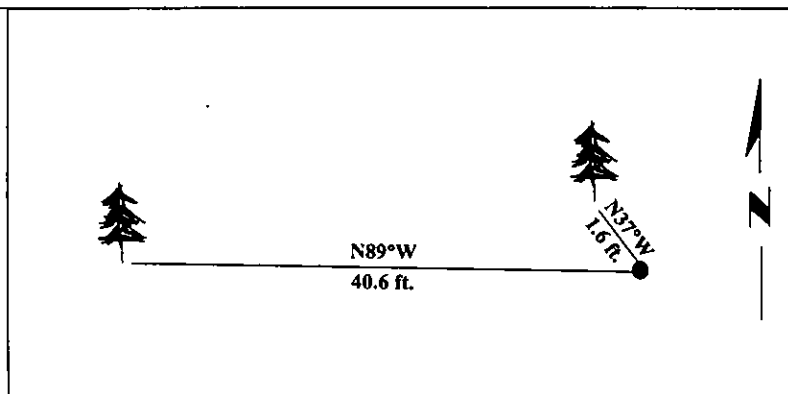
Established two bearing trees:

- A fir, 11 ins. diam., bears N89°W, 40.6 ft. dist., scribed "SW1/16 S7 BT".
- A fir, 17 ins. diam., bears N37°W, 1.6 ft. dist., scribed "SW1/16 S7 BT".

Painted bearing trees and attached Land Survey Monument and Bearing Tree signs.

Set a 6 ft. galvanized steel post, West, 4.0 ft. dist., with Land Survey Monument and Property Boundary decals.

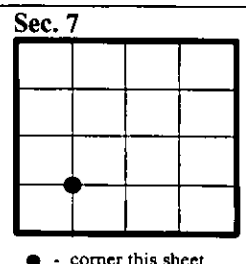
Magnetic Declination: 20° East.



SKETCH OF CORNER

CERTIFICATION	
I, <u>Mark Federman</u>	certify the information shown herein is true and correct.
<i>Mark Federman</i>	
I, <u>Alvah F. Hughes</u>	certify that this Corner Record correctly represents work performed by me or under my direction in compliance with the "Corner Recordation Act" (70-22-101, et seq., M.C.A.)
<i>Alvah F. Hughes</i>	
Date: <u>12/11/96</u>	Signature of Surveyor & Seal
Reg. No.: <u>7322LS</u>	
Employer: <u>U.S. FOREST SERVICE</u>	

Office of Clerk and Recorder, County of LINCOLN. This "corner record" was filed for record on FEB 3, 1997 and was noted on the cross-index plat and is assigned page No. 9193, in book No. CORAL M. CUMMINGS *by off*  
County Official



• - corner this sheet

U.S. DEPARTMENT OF AGRICULTURE  
WASHINGTON, D.C.  
OFFICE OF THE SECRETARY  
DIVISION OF CROPS  
WASHINGTON, D.C.  
JAN 10 1964

RECEIVED