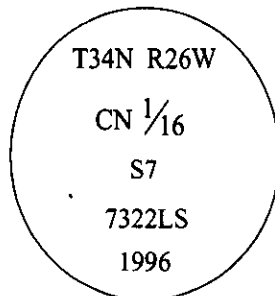


# CERTIFIED CORNER RECORDATION

Corner CN 1/16 Sec. 7 T. 34N R. 26W P.M., MT Lincoln County

- I. No previous history.
- II. Nothing found.
- III. At the position determined by survey, set a 3/4 ins. diam., 30 ins. long alum. rod, with a 3 1/4 ins. diam. alum. cap, 15 ins. above ground with a collar of stone, marked as shown:



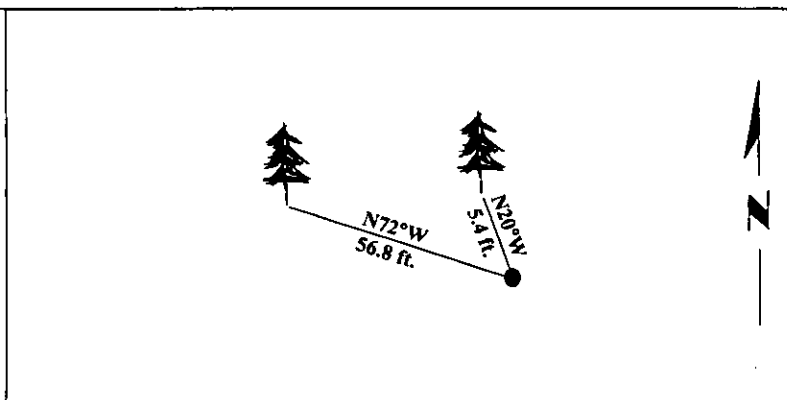
Established two bearing trees:

- A fir, 14 ins. diam., bears N20°W, 5.4 ft. dist., scribed "CN1/16 S7 BT".
- A fir, 9 ins. diam., bears N72°W, 56.8 ft. dist., scribed "CN1/16 S7 BT".

Painted bearing trees and attached Land Survey Monument and Bearing Tree signs.

Set a 6 ft. galvanized steel post, North, 3.0 ft. dist., with Land Survey Monument and Property Boundary decals.

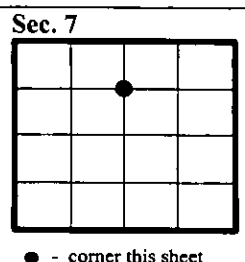
Magnetic Declination: 20° East.



SKETCH OF CORNER

|                                      |  |
|--------------------------------------|--|
| CERTIFICATION                        |  |
| I. <b>Mark Federman</b>              | certify the information shown herein is true and correct.  |
| <i>Mark Federman</i>                 |  |
| I. <b>Alvah F. Hughes</b>            | certify that this Corner Record correctly represents work performed by me, or under my direction in compliance with the "Corner Recordation Act" (79-22-101, et seq. M.C.A.) |
| <i>Alvah F. Hughes</i>               |  |
| Date: <b>12/11/96</b>                | Signature of Surveyor Seal   |
| Reg. No.: <b>7322LS</b>              |  |
| Employer: <b>U.S. FOREST SERVICE</b> |  |

Office of Clerk and Recorder, County of **LINCOLN**. This "corner record" was filed for record on **FEB 3, 1997** and was noted on the cross-index plat and is assigned page No. **9191**, in book No. **CORAL M. CUMMINGS** County Official *[Signature]*



● - corner this sheet

*[Faint, illegible markings]*