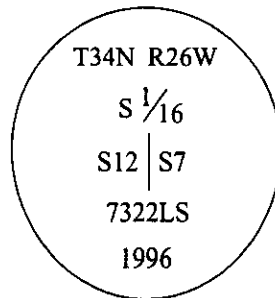


CERTIFIED CORNER RECORDATION

Corner S 1/16 Sec. 7 & 12 T. 34N R. 26W P.M., MT Lincoln County

- I. No previous history.
- II. Nothing found.
- III. At the position as determined by survey, set a 2 1/2 ins. diam., 30 ins. long alum. pipe, with a 3 1/4 ins. diam. alum. cap, 2 ins. above ground, marked as shown:



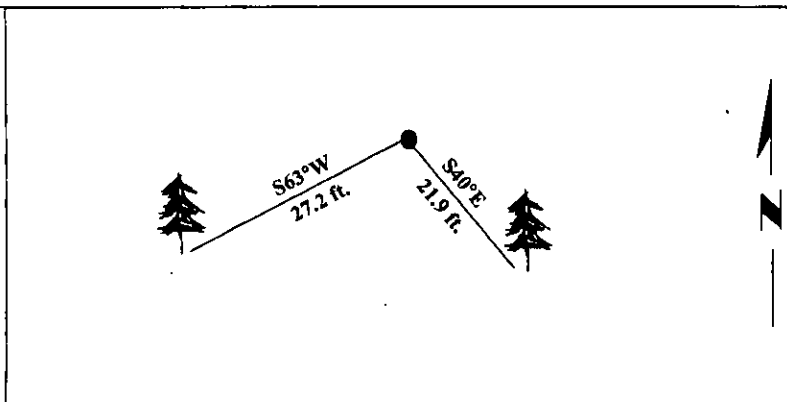
Established two bearing trees:

- A spruce, 15 ins. diam., bears S63°W, 27.2 ft. dist., scribed "X" " BT".
- A spruce, 9 ins. diam., bears S40°E, 21.9 ft. dist., scribed "S 1/16 S7 BT".

Painted bearing trees and attached Land Survey Monument and Bearing Tree signs.

- Set a 6 ft. galvanized steel post, North, 3.0 ft. dist., with Land Survey Monument and Property Boundary decals.
- Set a 6 ft. galvanized steel post, East, 3.0 ft. dist., with Land Survey Monument and Property Boundary decals.

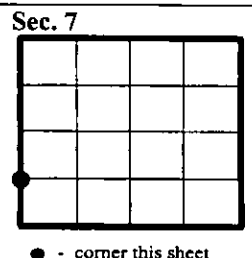
Magnetic Declination: 20° East.



SKETCH OF CORNER

CERTIFICATION	
I. <u>Mark Federman</u>	certify the information shown herein is true and correct.
I. <u>Alvah F. Hughes</u>	certify that this Corner Record correctly represents work performed by me or under my direction in compliance with the "Corner Recordation Act" (7-22-101) of sec. M.C.A.)
Date: <u>12/11/96</u>	Signature of Surveyor & Seal
Reg. No.: <u>7322LS</u>	
Employer: <u>U.S. FOREST SERVICE</u>	

Office of Clerk and Recorder, County of LINCOLN. This "corner record" was filed for record on FEB 3, 1997 and was noted on the cross-index plat and is assigned page No. 9189, in book No. CORAL M. CUMMINGS County Official B. J. B.



• - corner this sheet

