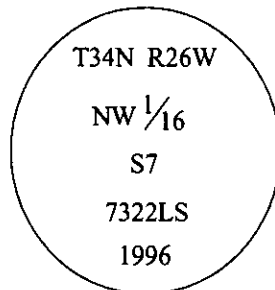


CERTIFIED CORNER RECORDATION

Corner NW 1/16 Sec. 7 T. 34N R. 26W P.M., MT Lincoln County

- I. No previous history.
- II. Nothing found.
- III. At the position as determined by survey, set a 3/4 ins. diam., 30 ins. long alum. rod, with a 3 1/4 ins. diam. alum. cap, 2 ins. above ground, marked as shown:



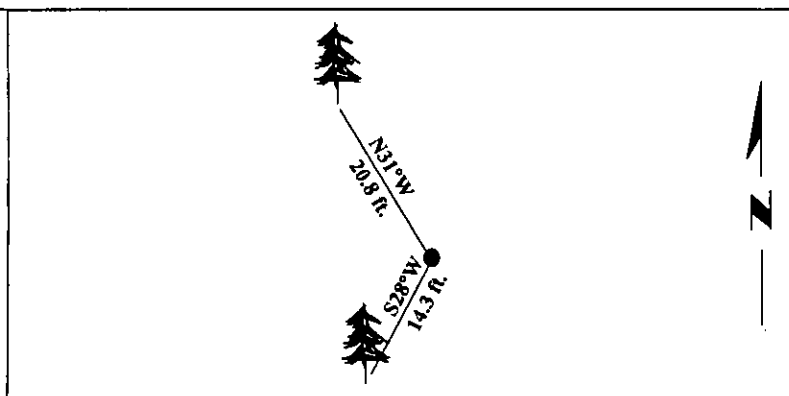
Established two bearing trees:

- A spruce, 9 ins. diam., bears N31°W, 20.8 ft. dist., scribed "NW1/16 S7 BT".
- A fir, 15 ins. diam., bears S28°W, 14.3 ft. dist., scribed "NW1/16 S7 BT".

Painted bearing trees and attached Land Survey Monument and Bearing Tree signs.

Set a 6 ft. galvanized steel post, South, 3.0 ft. dist., with Land Survey Monument and Property Boundary decals.

Magnetic Declination: 20° East.



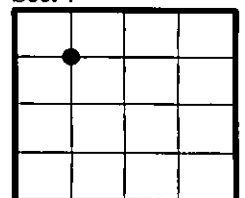
SKETCH OF CORNER

CERTIFICATION	
I. <u>Mark Federman</u>	certify the information shown herein is true and correct.
I. <u>Alvah F. Hughes</u>	certify that this Corner Record correctly represents work performed by me or under my direction in compliance with the "Corner Recordation Act" (70-22-101; et seq., M.C.A.)
Date: <u>12/11/96</u>	Signature of Surveyor & Seal
Reg. No.: <u>7322LS</u>	
Employer: <u>U.S. FOREST SERVICE</u>	

Office of Clerk and Recorder, County of LINCOLN. This "corner record" was filed for record on FEB 3, 1997 and was noted on the cross-index plat and is assigned page No. 9188, in book No. CORAL M. CUMMINGS

County Official

Sec. 7



• - corner this sheet

RECEIVED
FEB 10 1964
U.S. AIR FORCE
HEADQUARTERS
AIR FORCE
WASHINGTON, D.C.