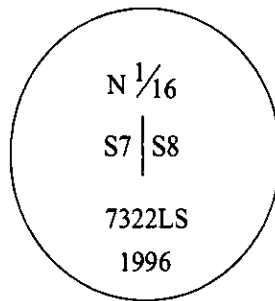


CERTIFIED CORNER RECORDATION

Corner N 1/16 Sec. 7 & 8 T. 34N R. 26W P.M., MT Lincoln County

- I. No previous history.
- II. Nothing found.
- III. At the position as determined by survey, set a 2 1/2 ins. diam., 30 ins. long alum. pipe, with a 3 1/4 ins. diam. alum. cap, 5 ins. above ground, marked as shown:

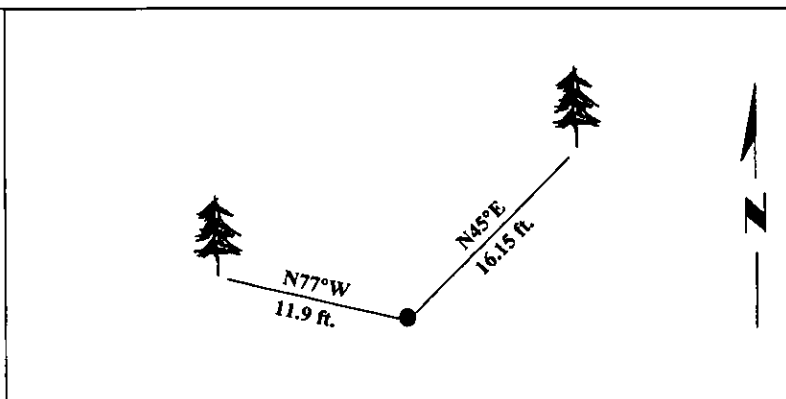


Established two bearing trees:

- A fir, 13 ins. diam., bears N45°E, 16.2 ft. dist., scribed "N1/16 S8 BT".
- A fir, 12 ins. diam., bears N77°W, 11.9 ft. dist., scribed "N 1/16 S7 BT".

Painted bearing trees and attached Land Survey Monument and Bearing Tree signs.

Magnetic Declination: 20° East.

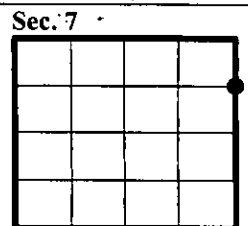


SKETCH OF CORNER

CERTIFICATION	
I, <u>Mark Federman</u>	certify the information shown herein is true and correct.
<i>Mark Federman</i>	
I, <u>Alvah F. Hughes</u>	certify that this Corner Record correctly represents work performed by me or under my direction in compliance with the "Corner Recordation Act" (70-22-101, et seq., M.C.A.)
<i>Alvah F. Hughes</i>	
Date: <u>12/11/96</u>	Signature of Surveyor & Seal
Reg. No.: <u>7322LS</u>	
Employer: <u>U.S. FOREST SERVICE</u>	

Office of Clerk and Recorder, County of LINCOLN. This "corner record" was filed for record on FEB 3, 1997 and was noted on the cross-index plat and is assigned page No. 9186, in book No. CORAL M. CUMMINGS

County Official *B. J. B.*



● - corner this sheet

[illegible]