

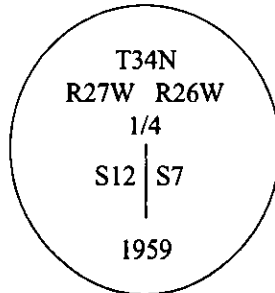
# CERTIFIED CORNER RECORDATION

Corner 1/4 Sec. 7, 12 T. 34N R. 26W, 27W P.M., MT Lincoln County

- I. 1894 G.L.O. original record by Frank L. Siger and Abram L. Jaqueth: Set a post, 3 ft. long, 3 ins. square, 24 ins. in the ground, mkd. "1/4" on W. face, from which,  
A tamarack, 18 ins. diam., bears N38°15'E, 42 lks. dist., mkd. "1/4 S BT".  
A tamarack, 18 ins. diam., bears S74°30' W, 11 lks. dist., mkd. "1/4 S BT".

1959 B.L.M. remonumentation record by David R. Cunningham and William E. Stephens: The 1/4 cor. of secs. 7 and 12, on the W. bdy. of the Tp., as determined from the remains of the original bearing trees.

At the corner point, set an iron post, 30 ins. long, 2 1/2 ins. diam., 26 ins. in the ground, in concrete, with a brass cap mkd:



from which, the remains of the original bearing trees:

- A stump, 20 ins. diam., bears N38 1/4°E, 42 lks. dist., with "BT" visible.  
A larch, 19 ins. diam., bears S74 1/2°W, 11 lks. dist., with "1/4 S" visible.

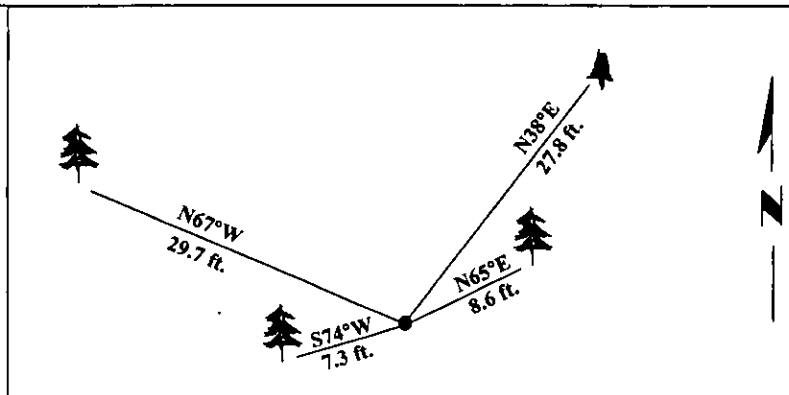
Raised a mound of stone, 2 ft. base, 1 1/2 ft. high, W. of the iron post.

Established 2 new bearing trees:

- A fir, 7 ins. diam., bears N65 1/2°E, 13 lks. dist., scribed "1/4 S7 BT".  
A spruce, 9 ins. diam., bears N67°W, 45 lks. dist., scribed "1/4 S12 BT".

- II. Found a 2 1/2 ins. diam. IP with a 3 1/4 ins. diam. BLM brass cap, mkd. as shown above, from which,  
A larch stump, 22 ins. diam., bears N38°E, 27.8 ft. (42 lks.) dist., with healed face. (GLO)  
A fir, 10 ins. diam., bears N65°E, 8.6 ft. (13 lks.) dist., with healed face. (BLM)  
A larch, 21 ins. diam., bears S74°W, 7.3 ft. (11 lks.) dist., with visible scribe. (GLO)  
A spruce, 13 ins. diam., bears N67°W, 29.7 ft. (45 lks.) dist., with healed face. (BLM)

- III. Painted bearing trees and attached Land Survey Monument and Bearing Tree signs.  
Magnetic Declination: 20° East.

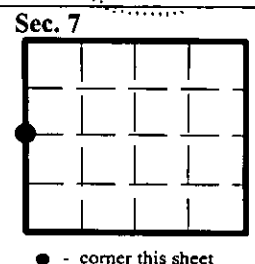


SKETCH OF CORNER

CERTIFICATION	
I. <u>Mark Federman</u>	certify the information shown herein is true and correct.
<i>Mark Federman</i>	
I. <u>Alvah F. Hughes</u>	certify that this Corner Record correctly represents work performed by me or under my direction in compliance with the "Corner Recordation Act" (70-22-101, et seq., M.C.A.)
<i>Alvah F. Hughes</i>	
Date: <u>12/27/96</u>	Signature of Surveyor & Seal
Reg. No.: <u>7322LS</u>	
Employer: <u>U.S. FOREST SERVICE</u>	

Office of Clerk and Recorder, County of LINCOLN. This "corner record" was filed for record on FEB 3, 1997 and was noted on the cross-index plat and is assigned page No. 9184, in book No. CORAL M. CUMMINGS *By DFB*

County Official



• - corner this sheet

RECEIVED  
FEB 22 1964  
U.S. DEPT. OF JUSTICE  
FEDERAL BUREAU OF INVESTIGATION  
WASHINGTON, D.C.