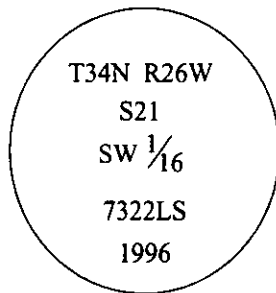


# CERTIFIED CORNER RECORDATION

Corner SW 1/16 Sec. 21 T. 34N R. 26W P.M., MT Lincoln County

- I. No previous history.
- II. Nothing found.
- III. At the position determined by survey, set a 3/4 in. diam., 30 in. long aluminum rod, 18 ins. in the ground, with a 3 1/4 in. diam. alum. cap, marked as shown:

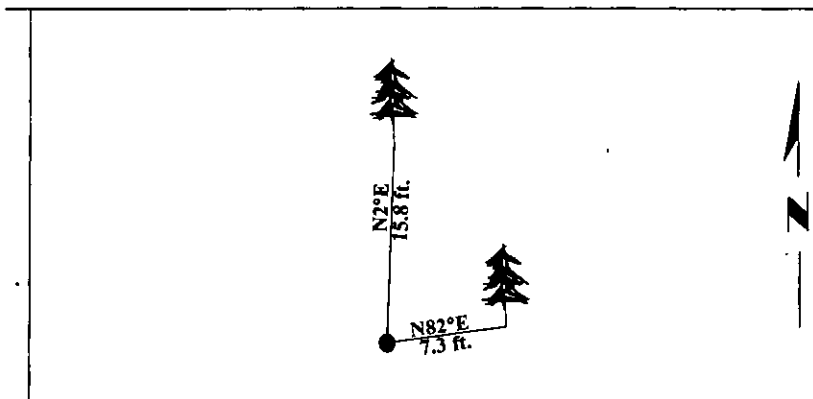


Established two bearing trees:

- A fir, 16 ins. diam., bears N2°E, 15.8 ft. dist., scribed "SW 1/16 S21 BT".
- A fir, 5 ins. diam., bears N82°E, 7.3 ft. dist., scribed "X" "BT".

Painted bearing trees and attached Land Survey Monument and Bearing Tree signs.

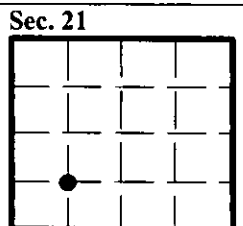
Magnetic Declination: 20° East.



SKETCH OF CORNER

CERTIFICATION	
I. <u>Mark Federman</u>	certify the information shown herein is true and correct.
<i>Mark Federman</i>	
I. <u>Alvah F. Hughes</u>	certify that this Corner Record correctly represents work performed by me, or under my direction, in compliance with the "Corner Recordation Act," (70-22-101 et seq., M.C.A.)
<i>Alvah F. Hughes</i>	
Date: <u>12/10/96</u>	Signature of Surveyor & Seal
Reg. No.: <u>7322LS</u>	
Employer: <u>U.S. FOREST SERVICE</u>	

Office of Clerk and Recorder, County of LINCOLN. This "corner record" was filed for record on FEB 3, 1997 and was noted on the cross-index plat and is assigned page No. 9182, in book No.                     . CORAL M. CUMMINGS *B. DJB*  
County Official



● - corner this sheet

