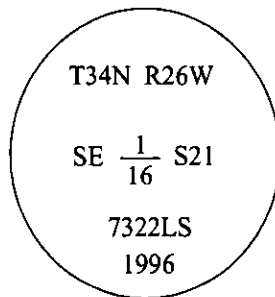


# CERTIFIED CORNER RECORDATION

Corner SE 1/16 Sec. 21 T. 34N R. 26W P.M., MT Lincoln County

- I. No previous history.
- II. Nothing found.
- III. At the position determined by survey, set a 3/4 in. diam., 30 in. long aluminum rod, 18 ins. in the ground, with a 3 1/4 in. diam. alum. cap, marked as shown:



Raised a collar of stone around the monument.

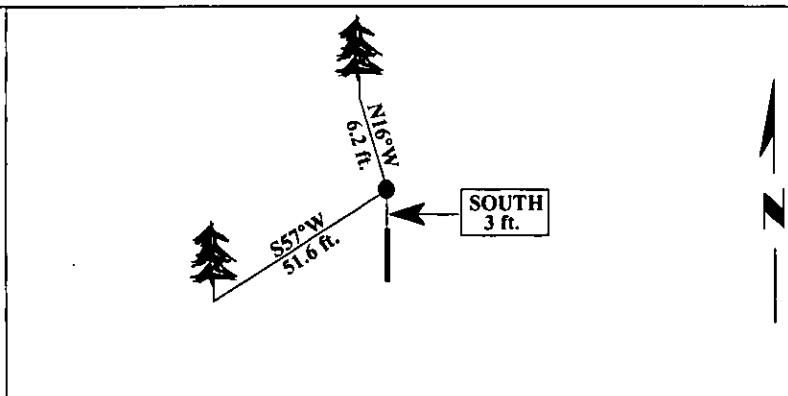
Established two bearing trees:

- A fir, 6 ins. diam., bears S57°W, 51.6 ft. dist., scribed "SE 1/16 S21 BT".
- A fir, 18 ins. diam., bears N16°W, 6.2 ft. dist., scribed "SE 1/16 S21 BT".

Painted bearing trees and attached Land Survey Monument and Bearing Tree signs.

Set a 6 ft. steel guard post with LSM and PB decals affixed, SOUTH, 3 feet.

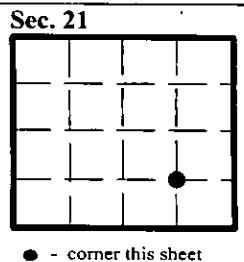
Magnetic Declination: 20° East.



SKETCH OF CORNER

CERTIFICATION	
I, <u>Mark Federman</u>	certify the information shown herein is true and correct.
I, <u>Alvah F. Hughes</u>	certify that this Corner Record correctly represents work performed by me or under my direction in compliance with the "Corner Recordation Act", (70-22-101, et seq., M.C.A.)
Date: <u>12/10/96</u>	Signature of Surveyor & Seal:
Reg. No.: <u>7322LS</u>	
Employer: <u>U.S. FOREST SERVICE</u>	

Office of Clerk and Recorder, County of LINCOLN. This "corner record" was filed for record on FEB 3, 1997 and was noted on the cross-index plat and is assigned page No. 9180, in book No.                     . CORAL M. CUMMINGS County Official



● - corner this sheet

