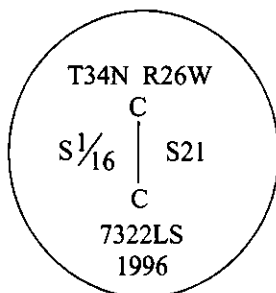


CERTIFIED CORNER RECORDATION

Corner CS 1/16 Sec. 21 T. 34N R. 26W P.M., MT Lincoln County

- I. No previous history.
- II. Nothing found.
- III. At the position determined by survey, set a 3/4 in. diam., 30 in. long aluminum rod, 18 ins. in the ground, to bedrock, with a 3 1/4 in. diam. alum. cap, marked as shown:



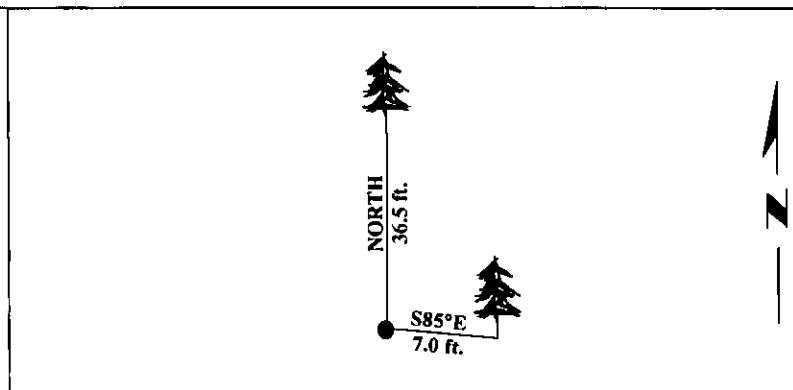
Raised a collar of stone around the monument.

Established two bearing trees:

- A fir, 5 ins. diam., bears NORTH, 36.5 ft. dist., scribed "X" "BT".
- A fir, 6 ins. diam., bears S85°E, 7.0 ft. dist., scribed "CS 1/16 S21 BT".

Painted bearing trees and attached Land Survey Monument and Bearing Tree signs.

Magnetic Declination: 20° East.



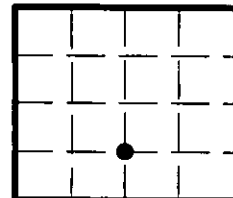
SKETCH OF CORNER

CERTIFICATION	
I. <u>Mark Federman</u>	certify the information shown herein is true and correct.
<u>Mark Federman</u>	
I. <u>Alvah F. Hughes</u>	
certify that this Corner Record correctly represents work performed by title or under my direction in compliance with the "Corner Recordation Act" (70-22-101, et seq., M.C.A.)	
<u>Alvah F. Hughes</u>	
Date: <u>12/11/96</u>	Signature of Surveyor & Seal
Reg. No.: <u>7322LS</u>	
Employer: <u>U.S. FOREST SERVICE</u>	

Office of Clerk and Recorder, County of LINCOLN. This "corner record" was filed for record on FEB 3, 1997 and was noted on the cross-index plat and is assigned page No. 9175, in book No. .

CORAL M. CUMMINGS
County Official

Sec. 21



• - corner this sheet

