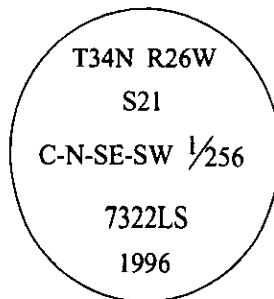


CERTIFIED CORNER RECORDATION

Corner C-N-SE-SW 1/256 Sec. 21 T. 34N R. 26W P.M., MT Lincoln County

- I. No previous history.
- II. Nothing found.
- III. At the position determined by survey, set a 3/4 in. diam., 30 in. long aluminum rod, 27 ins. in the ground, with a 3 1/4 in. diam. alum. cap, marked as shown:

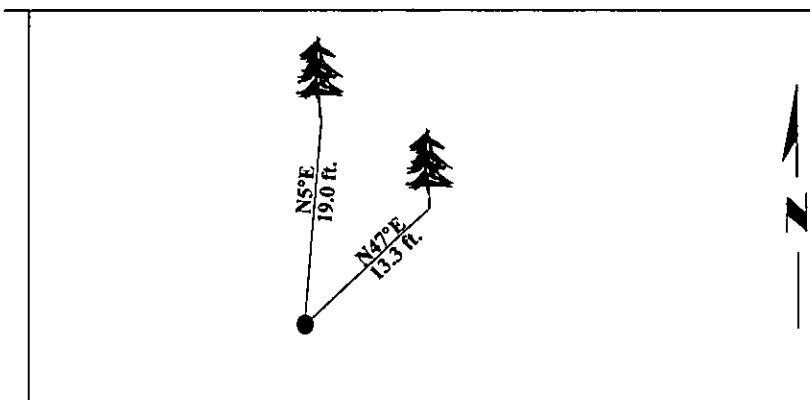


Established two bearing trees:

- A fir, 6 ins. diam., bears N5°E, 19.0 ft. dist., scribed "X" "BT".
- A fir, 5 ins. diam., bears N47°E, 13.3 ft. dist., scribed "C-N-SE-SW 1/256 S21 BT".

Painted bearing trees and attached Land Survey Monument and Bearing Tree signs.

Magnetic Declination: 20° East.

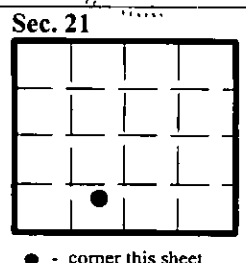


SKETCH OF CORNER

CERTIFICATION I, <u>Mark Federman</u> certify the information shown herein is true and correct. <u>Mark Federman</u>	
I, <u>Alvah F. Hughes</u> certify that this Corner Record correctly represents work performed by me or under my direction in compliance with the "Corner Recordation Act" (70-22-101, et seq., M.C.A.) <u>Alvah F. Hughes</u> Signature of Surveyor & Seal	
Date: <u>12/11/96</u>	
Reg. No.: <u>7322LS</u>	
Employer: <u>U.S. FOREST SERVICE</u>	

Office of Clerk and Recorder, County of LINCOLN. This "corner record" was filed for record on FEB 3, 1997 and was noted on the cross-index plat and is assigned page No. 9174, in book No. _____.

CORAL M. CUMMINGS
County Official



RECEIVED
FEB 14 1964
U.S. DEPT. OF JUSTICE
FEDERAL BUREAU OF INVESTIGATION
WASHINGTON, D.C.