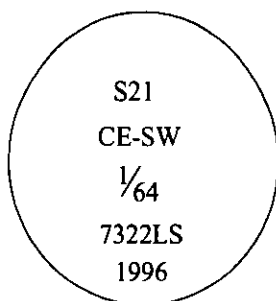


CERTIFIED CORNER RECORDATION

Corner **CE SW** Sec. **21** T. **34N** R. **26W** P.M., MT **Lincoln** County
1/64

- I. No previous history.
- II. Nothing found.
- III. At the position determined by survey, set a 3/4 in. diam., 30 in. long aluminum rod, 28 ins. in the ground, with a 3 1/4 in. diam. alum. cap, marked as shown:



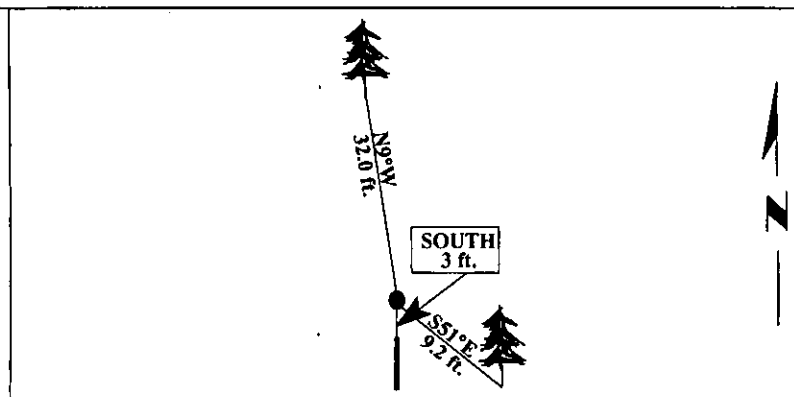
Established two bearing trees:

- A fir, 6 ins. diam., bears S51°E, 9.2 ft. dist., scribed "CESW 1/64 S21 BT".
- A fir, 18 ins. diam., bears N9°W, 32.0 ft. dist., scribed "CESW 1/64 S21 BT".

Painted bearing trees and attached Land Survey Monument and Bearing Tree signs.

Set a 6 ft. steel guard post with LSM and PB decals affixed, SOUTH, 3 feet.

Magnetic Declination: 20° East.

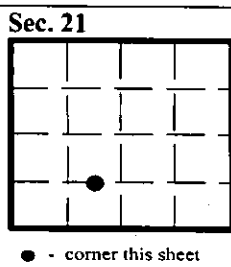


SKETCH OF CORNER

CERTIFICATION	
I. <u>Mark Federman</u>	certify the information shown herein is true and correct.
<i>Mark Federman</i>	
I. <u>Alvah F. Hughes</u>	
certify that this Corner Record correctly represents work performed by me or under my direction in compliance with the "Corner Recordation Act" (70-22-101 et seq., M.C.A.)	
<i>Alvah F. Hughes</i>	
Date: <u>12/10/96</u>	Signature of Surveyor & Seal
Reg. No.: <u>7322LS</u>	
Employer: <u>U.S. FOREST SERVICE</u>	

Office of Clerk and Recorder, County of LINCOLN. This "corner record" was filed for record on FEB 3, 1997 and was noted on the cross-index plat and is assigned page No. 9172, in book No. _____.

CORAL M. CUMMINGS County Official *By DPB*



• - corner this sheet

