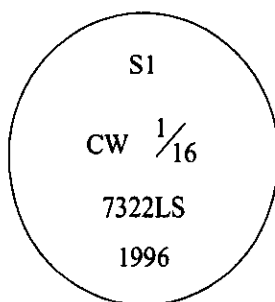


# CERTIFIED CORNER RECORDATION

Corner CW 1/16 Sec. 1 T. 34N R. 26W P.M., MT Lincoln County

- I. No previous history.
- II. Nothing found.
- III. At the corner position as determined by survey, set a 3/4 in. diam., 30 in. long aluminum rod, 25 ins. into the ground, with a 3 1/4 in. diam. alum. cap mkd. as shown:

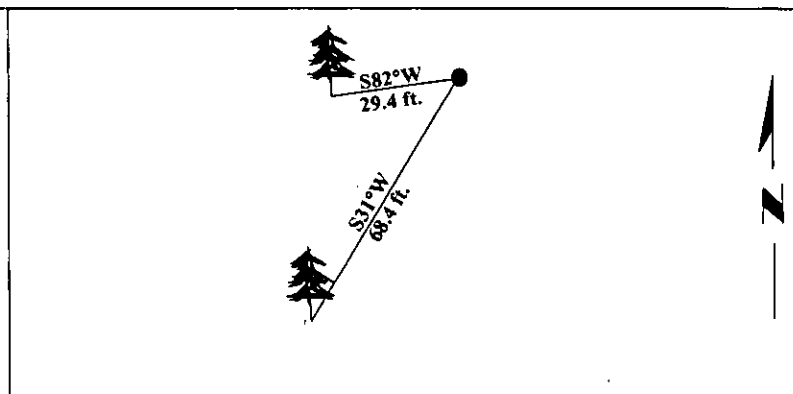


Established two bearing trees:

- A fir, 10 ins. diam., bears S31°W, 68.4 ft. dist., scribed "CW 1/16 S1 BT".
- A fir, 8 ins. diam., bears S82°W, 29.4 ft. dist., scribed "CW 1/16 S1 BT".

Painted bearing trees and attached Land Survey Monument and Bearing Tree signs.

Magnetic Declination: 20° East.

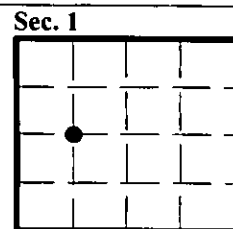


SKETCH OF CORNER

|                                      |   |
|--------------------------------------|---|
| CERTIFICATION                        |   |
| I. <u>Mark Federman</u>              | certify the information shown herein is true and correct.   |
|                                      |   |
| I. <u>Alvah F. Hughes</u>            | certify that this Corner Record correctly represents work performed by me or under my direction in compliance with the "Corner Recordation Act", (70-22-101, et seq., M.C.A.) |
|                                      |   |
| Date: <u>12/12/96</u>                | Signature of Surveyor <u>Beat</u>   |
| Reg. No.: <u>7322LS</u>              |   |
| Employer: <u>U.S. FOREST SERVICE</u> |   |

Office of Clerk and Recorder, County of LINCOLN. This "corner record" was filed for record on FEB 3, 1997 and was noted on the cross-index plat and is assigned page No. 9171, in book No. CORAL M. CUMMINGS

County Official



• - corner this sheet

