

# CERTIFIED CORNER RECORDATION

Corner N 1/4 Sec. 1 T. 34N R. 26W P.M., MT Lincoln County

I. 1894 G.L.O. original survey by Abram L. Jaqueth: Set a wooden post, 3 ft. long, 3 ins. square, 24 ins. in the ground, for 1/4 Sec. Cor., marked "1/4 S." on N. face, from which:

A pine, 6 ins. diam., bears S54°E, 68 lks. dist., scribed "1/4 S BT".  
A poplar, 10 ins. diam., bears N11°W, 56 lks. dist., scribed "1/4 S BT".

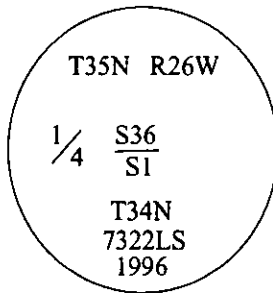
1994 Certificate of Survey No. 1698 by Tom Sands (7975S), filed in Lincoln County Courthouse:  
For the 1/4 Sec. Cor. of secs. 1 and 36, set by single proportion, a 5/8 in. diam., 24 in. long rebar with a yellow plastic cap mkd:



No new bearing trees established.

II. Found a 5/8 in. rebar, firmly set, flush with the ground, with a yellow plastic cap mkd. as shown above.

III. At the accepted position of found rebar, remonument with a 2 1/2 in. diam., 30 in. long aluminum pipe, 28 ins. into the ground, with a 3 1/4 in. diam. alum. cap mkd. as shown:

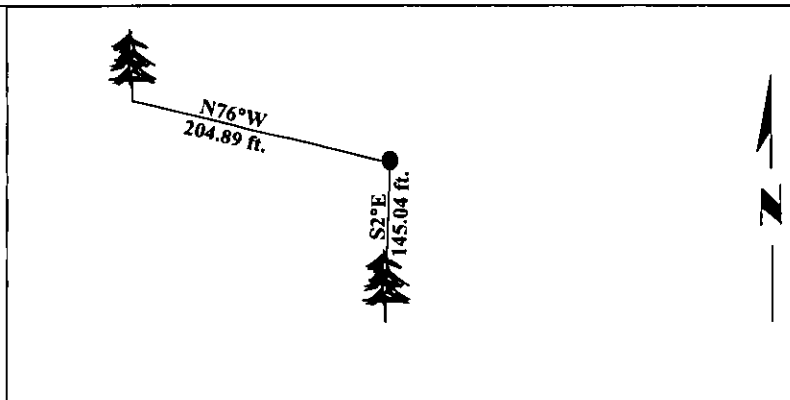


Established two bearing trees:

A spruce, 18 ins. diam., bears S2°E, 145.04 ft. dist., scribed "1/4 S1 BT".  
A spruce, 10 ins. diam., bears N76°W, 204.89 ft. dist., scribed "1/4 S36 BT".

Painted bearing trees and attached Land Survey Monument and Bearing Tree signs.

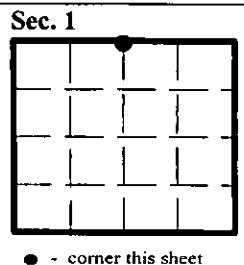
Magnetic Declination: 20° East.

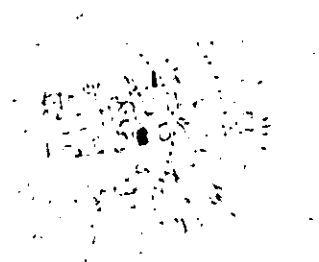


SKETCH OF CORNER

CERTIFICATION	
I. <u>Thomas M. Hommel</u>	certify the information shown herein is true and correct.
I. <u>Alvah F. Hughes</u>	certify that this Corner Record correctly represents work performed by me or under my direction in compliance with the "Corner Recordation Act" (70-22-101, et seq. (M.C.A.))
Date: <u>12/12/96</u>	Signature of Surveyor & Seal
Reg. No.: <u>7322LS</u>	
Employer: <u>U.S. FOREST SERVICE</u>	

Office of Clerk and Recorder, County of LINCOLN. This "corner record" was filed for record on FEB 3, 1997 and was noted on the cross-index plat and is assigned page No. 9170, in book No. CORAL M. CUMMINGS County Official B. J. B.





11-11-11