

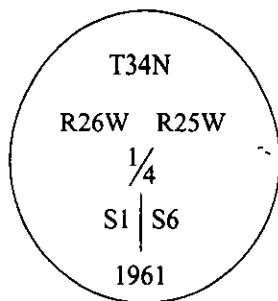
CERTIFIED CORNER RECORDATION

Corner E 1/4 Sec. 1 T. 34N R. 26W P.M., MT Lincoln County

I. 1893 G.L.O. orig. record by Abram L. Jaqueth: Set a limestone, 13x10x6 ins., 9 ins. in the ground, mkd. "1/4" on W. face, and 2 bearing trees.

1961 B.L.M. remonumentation record by David Cunningham: The 1/4 sec. cor. of secs. 1 and 6, on the W. bdy. of the Tp., as determined from the remains of the original bearing trees.

At the corner point, set an iron post, 30 ins. long, 2 1/2 ins. diam., 28 ins. in the ground, with an brass cap mkd. as shown:



Established two bearing trees, and raised a mound of stone, 3 ft. base, 2 ft. high, W. of the iron post.

II. Found a 3 1/4 in. diam. brass cap, flush with the ground, mkd. as shown above, from which:

A stump, 25 ins. diam., bears S39°E, 21.4 ft. (32.4 lks.) dist., mkd. with visible scribing.

(G.L.O. rec.-S43°E, 31 lks.)

A fir, 17 ins. diam., bears S12 1/2°E, 68.3 ft. dist., mkd. with a healed face. (B.L.M. record)

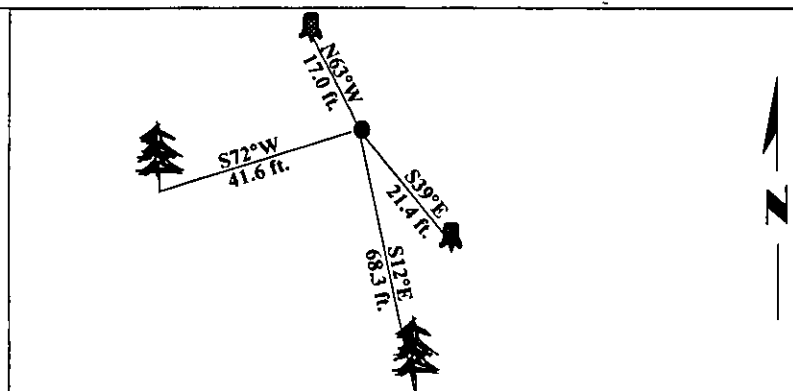
A larch, 11 ins. diam., bears S72°W, 41.6 ft. dist., mkd. with a healed face. (B.L.M. record)

A stump, 28 ins. diam., bears N63°W, 17.0 ft. (25.7 lks.) dist., with no visible marks.

(G.L.O. rec.- 24 lks.)

III. Painted bearing trees and attached Land Survey Monument and Bearing Tree signs.

Magnetic Declination: 20° East.

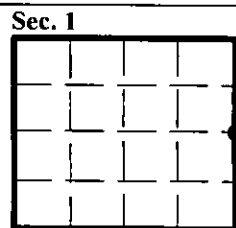


SKETCH OF CORNER

CERTIFICATION	
I. <u>Thomas M. Hommel</u>	certify the information shown herein is true and correct.
<i>Thomas M. Hommel</i>	
I. <u>Alvah F. Hughes</u>	certify that this Corner Record correctly represents work performed by me or under my direction in compliance with the "Corner Recordation Act" (70-22-101; et seq., M.C.A.)
<i>Alvah F. Hughes</i>	
Date: <u>12/11/96</u>	Signature of Surveyor & Seal
Reg. No.: <u>7322LS</u>	
Employer: <u>U.S. FOREST SERVICE</u>	

Office of Clerk and Recorder, County of LINCOLN. This "corner record" was filed for record on FEB 3, 1997 and was noted on the cross-index plat and is assigned page No. 9168, in book No. _____.

CORAL M. CUMMINGS By *dyb*
County Official



• - corner this sheet

