

CERTIFIED LAND CORNER RECORDATION
(REFERENCE FSM 7153.53)

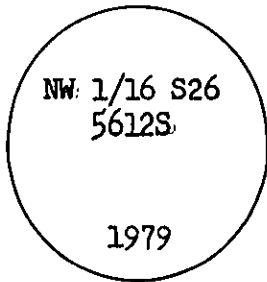
DESCRIPTION OF CORNER EVIDENCE FOUND, AND ORIGINAL RECORD (IF KNOWN)

NONE

DESCRIPTION OF MONUMENT AND ACCESSORIES ESTABLISHED
TO PERPETUATE THE ORIGINAL LOCATION OF THIS CORNER:

Date of work: 1979

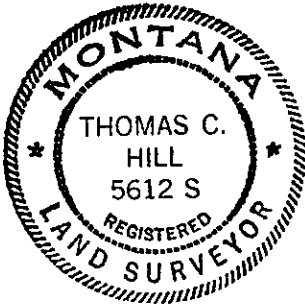
Set a 3 1/2" brass cap firmly in bedrock, marked as shown:
from which a 7" Fir, bears N2°33'E, 20.0 Ft., scribed X BT
a 8" Larch, bears S44°23'W, 21.3 Ft., scribed NW 1/16 S26 BT



SKETCH, WITH COURSE AND DISTANCE TO ADJACENT CORNERS IF DETERMINED IN THIS SURVEY.
(MAY SKETCH OR PASTE REPRODUCTION ON REVERSE SIDE.)

See Certificate of Survey No. 748

Surveyor's Seal



I, _____
certify that the information shown herein is true and correct.

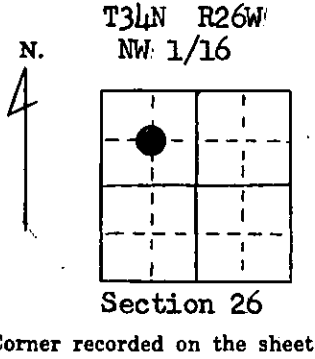
Signature of Ground Party Chief

I, Thomas C. Hill
certify that I have carefully performed or reviewed the work done on the diagrammed corner as reported on this recordation form and approve the same.

Signature of Surveyor

5612-S
Registration Number

DIAGRAM OF CORNER:



Office of Clerk and Recorder, County of Lincoln

This "corner record" was filed for record on the 3rd day of March 1980, was noted on the cross-index plat and is assigned page No. 673, in book No. 1

Charles L. Hughes, Jr. Deputy Clerk
County Official

Cross Index No. 518 T. 34 R. 26 Mer.



[Faint, illegible text and markings are scattered across the page, including a circular stamp on the right side.]