

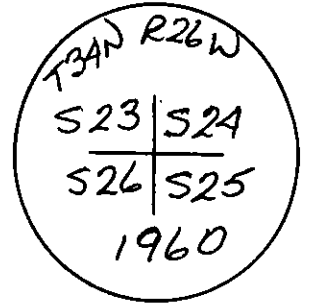
CERTIFIED LAND CORNER RECORDATION
(REFERENCE FSM 7153.53)

DESCRIPTION OF CORNER EVIDENCE FOUND, AND ORIGINAL RECORD (IF KNOWN)

Found: Monument in good condition as recorded. BT's alive and in good condition. @
Record bearings and distances.

1960 BLM Record: From the remains of the original wooden post witnessed by the remains of
the original bearing trees; set an iron post 30" long, 2½" diam., 26" in ground
with brass cap marked as shown.

From which: A 9" fir bears N39¼°E, 70 lks., mkd., T34N R26W S24BT
An 8" fir bears S35¼°E, 92 lks., mkd., T34N R26W S25BT
An 8" fir bears S27¼°W, 24 lks., mkd. T34N R26W S26BT
A 6" fir bears N11½°W, 35 lks., mkd. T34N R26W S23BT



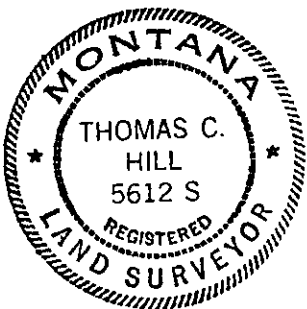
DESCRIPTION OF MONUMENT AND ACCESSORIES ESTABLISHED
TO PERPETUATE THE ORIGINAL LOCATION OF THIS CORNER:

Date of work: 1979

SKETCH, WITH COURSE AND DISTANCE TO ADJACENT CORNERS IF DETERMINED IN THIS SURVEY.
(MAY SKETCH OR PASTE REPRODUCTION ON REVERSE SIDE.)

See Certificate of Survey No. 748

Surveyor's Seal



I, _____
certify that the information shown herein is true and
correct.

Signature of Ground Party Chief

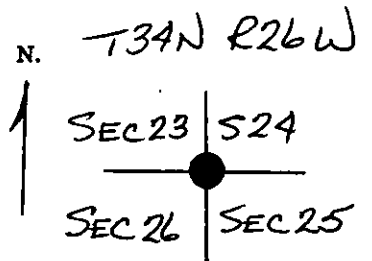
Thomas C. Hill

I, _____
certify that I have carefully performed or reviewed the
work done on the diagrammed corner as reported on this
recording form and approve the same.

Signature of Surveyor

5612-S
Registration Number

DIAGRAM OF CORNER:



● = Corner recorded on the sheet

Office of Clerk and Recorder, County of Lincoln

This "corner record" was filed for record on the 3rd day of March, 1980, was noted on the cross-index plat, and is
assigned page No. 634, in book No. 1

Deborah L. Vaughan, by Betty Lee, County Official

Cross Index No. R21 T. 34 R. 26 Mer.

THE UNITED STATES OF AMERICA

IN SENATE

January 10, 1907

REPORT

OF THE

COMMISSIONER OF THE GENERAL LAND OFFICE

IN RESPONSE TO A RESOLUTION PASSED BY THE SENATE

APRIL 10, 1906

UNITED STATES GOVERNMENT

