

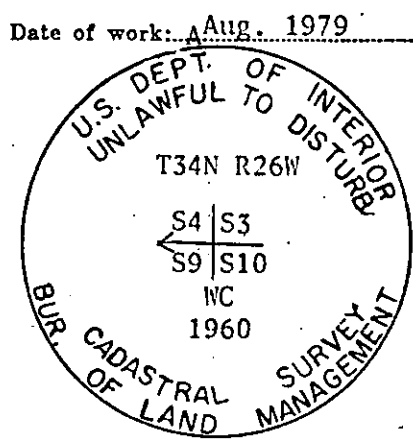
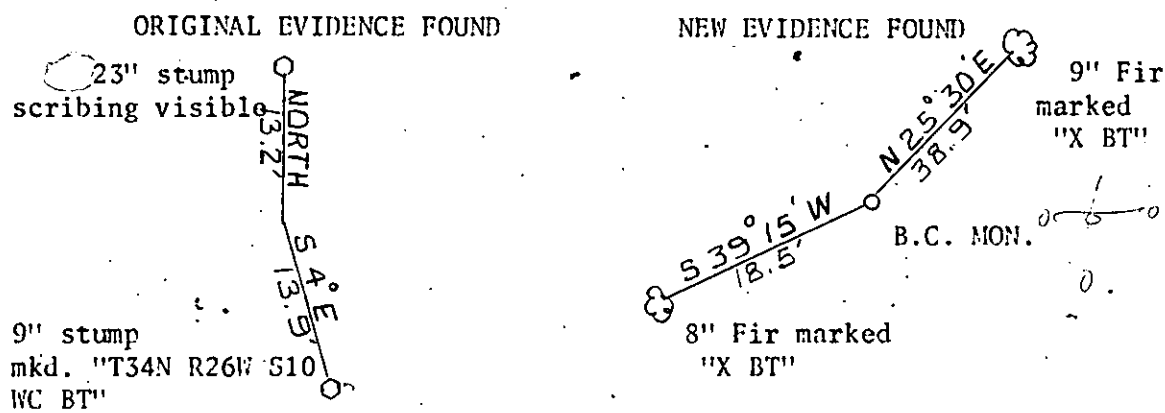
CERTIFIED LAND CORNER RECORDATION

DESCRIPTION OF CORNER EVIDENCE FOUND, AND ORIGINAL RECORD (IF KNOWN)

ORIGINAL G.L.O. NOTES: "Set a post 4 ft. long, 4 ins. square, 24 ins. in the ground for W.C. to cor. to secs. 3,4,9 & 10 marked W.C. with T.34N. S 3 on N.E., R26W. S10 on S.E., S9 on S.W. & S4 on N.W. faces with 5 notches on S & 4 notches on E. edges from which A tamarack 18 ins. diam. bears North 20 lks dist. marked T.34N. R26W S 3 W.C.B.T.
A birch 6 ins. dian. bears S.40E 21 lks. dist. marked T.34N. R26W S10 W.C.B.T."

FOUND: FOUND BRASS CAP MONUMENT SET BY THE B.L.M.

DESCRIPTION OF MONUMENT AND ACCESSORIES ESTABLISHED TO PERPETUATE THE ORIGINAL LOCATION OF THIS CORNER:



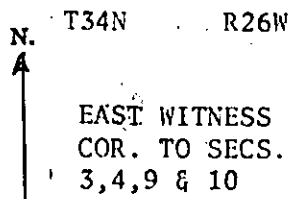
SKETCH, WITH COURSE AND DISTANCE TO ADJACENT CORNERS IF DETERMINED IN THIS SURVEY. (MAY SKETCH OR PASTE REPRODUCTION ON REVERSE SIDE.)

Surveyor's Seal

I, JAMES BURTON
certify that the information shown herein is true and correct.
Signature of Ground Party Chief

I, M. L. HAIGES
certify that I have carefully performed or reviewed the work done on the diagrammed corner as reported on this recordation form and approve the same.
Signature of Surveyor

DIAGRAM OF CORNER:



= Corner recorded on the sheet

2520 S
Registration Number

Office of Clerk and Recorder, County of Lincoln

This "corner record" was filed for record on the 21st day of September 1979, was noted on the cross-index plat and is

assigned page No. 532, in book No. 1

County Official

