

- INSTRUCTIONS
1. Original and/or sub-record used to evaluate the corner position.
 2. Description of evidence found, note discrepancies in the record, state method of establishing lost or obliterated corners.
 3. Description of monument and accessories set to perpetuate the corner position.
 4. Sketch or corner, show all pertinent data which can best be shown in a sketch example, corner marking, topography lines, position of accessories, etc.
 5. Certification must be signed and sealed by Registered Land Surveyor in State of Montana.
 6. Fill in Cross Index & Section Diagram at bottom of sheet.

CERTIFIED CORNER RECORDATION

Corner N1/16 29/28 T. 34N R. 26W P.M.M. Lincoln County

Record of Original Corner

No previous record on file.

Description of Corner Evidence Found

No evidence found on ground

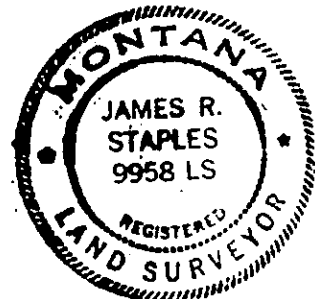
Description of Monument and Accessories Set

Set a standard 3 1/4" dia. Forest Service aluminum cap on a 3/4" x 30" aluminum shaft 27" in the ground with a rock cairn from which:

A 6" larch bears S82°E, 25.9 ft. dis. scribed N1/16S28BT

A 10" larch bears S51°W, 39.7 ft. dis. scribed N1/16S29BT

Bearing trees were signed and blazes painted red. Placed a 6 ft. steel post with Land Survey Monument decal attached 6 ft. west of corner. Corner falls on flat ground at SE corner of clearcut. Placed a K tag on a 10" lodgepole pine on west side of Rd.# 3635 63' east of corner.



CERTIFICATION

I, Steven R. Moyer

certify the information shown herein to be true and correct.

Steven R. Moyer
Signature of Ground Party Agent

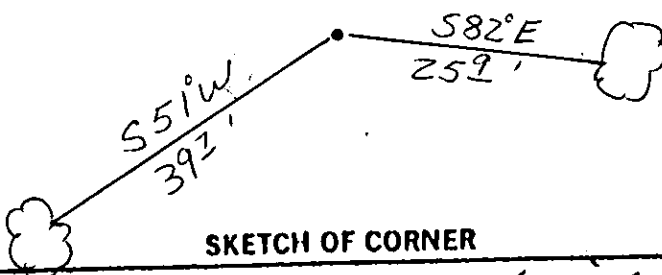
I, James R. Staples

certify that this Corner Record correctly represents work performed by me or under my direction in compliance with the "Corner Recordation Act" (70-22-101, et seq., M.D.A.)

James R. Staples
Signature of Surveyor & Seal

Date: 10/5/90 Reg. No. 9958LS

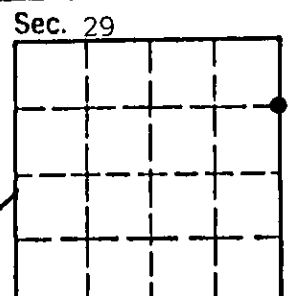
Employer: J.R.S. & Associates



SKETCH OF CORNER

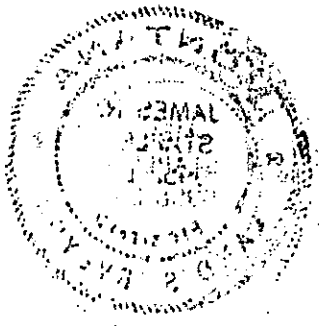
Office of Clerk and Recorder, County of Lincoln. This "corner record" was filed for record on the Nov 9 day of 1990 was noted on the cross-index plat and is assigned page No. 4327 in book No. _____

Grant B. Sigel by Bill Bushell
County Official



Cross Index No. S-9 T. 34N R. 26W P.M.M.

• corner this sheet



MASSACHUSETTS
COMMONWEALTH
SECRETARY OF THE TREASURY
JAMES H. BAKER
1902