

- INSTRUCTIONS
1. Original and/or sub-record used to evaluate the corner position.
 2. Description of evidence found, note discrepancies in the record, state method of establishing lost or obliterated corners.
 3. Description of monument and accessories set to perpetuate the corner position.
 4. Sketch of corner, show all pertinent data which can best be shown in a sketch example, corner marking, topography lines, position of accessories, etc.
 5. Certification must be signed and sealed by Registered Land Surveyor in State of Montana.
 6. Fill in Cross Index & Section Diagram at bottom of sheet.

CERTIFIED CORNER RECORDATION

Corner CE1/16 S28 T. 34N R. 26W P.M.M. Lincoln County

Record of Original Corner

No previous record on file.

Description of Corner Evidence Found

No evidence found on ground

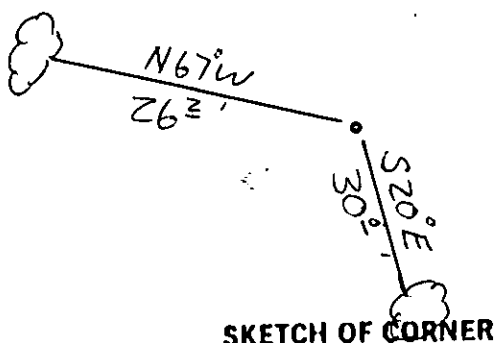
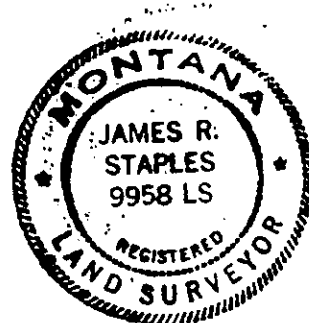
Description of Monument Set

Set a standard 3 1/4" dia. Forest Service aluminum cap on a 3/4" x 30" aluminum shaft 28" in the ground with a rock cairn from which:

A 7 1/2" spruce bears S20°E, 30.0 ft. dis. scribed CE1/16S28BT

A 15" larch bears N67°W, 26.2 ft. dis. scribed CE1/16S28BT

Bearing trees were signed and blazes painted red. Placed 6 ft. steel post with Land Survey Monument decal attached 6 ft. east of corner. Corner falls 35' east of east edge of small N-S draw on west slope in moderately thick timber. Placed a K tag on a 10" douglas fir on west side of road 210' east of corner.



SKETCH OF CORNER

CERTIFICATION

I, Steven R. Moyer

certify the information shown herein is true and correct.

Steven R. Moyer
Signature Ground Party Chief

I, James R. Staples

certify that this Corner Record correctly represents work performed by me or under my direction in compliance with the "Corner Recordation Act" (70-22-101, et seq., M.C.A.)

James R. Staples
Signature of Surveyor & Seal

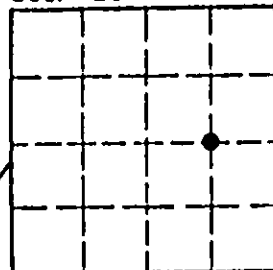
Date: 10/5/90 Reg. No. 9958LS

Employer: J.R.S. & Associates

Office of Clerk and Recorder, County of Lincoln. This "corner record" was filed for record on the Nov 9 day of 1990 was noted on the cross-index plat and is assigned page No. 4324, in book No. _____

Janet B. Sugil by Bill Brackley
County Official

Sec. 28



Cross Index No. T-12 T. 34N R. 26W P.M.M.

• corner this sheet

