

INSTRUCTIONS

1. Original and/or subsequent record used to evaluate the corner position.
2. Description of evidence found, note discrepancies in the record, state method of establishing lost or obliterated corner.
3. Description of monument and accessories set to perpetuate the corner position.
4. Sketch of corner, show all pertinent data which can best be shown in a sketch example, corner marking, topography, etc., position of accessories, etc.
5. Certification must be signed and sealed by Registered Land Surveyor in State of Montana.
6. Fill in Cross Index & Section Diagram at bottom of sheet.

CERTIFIED CORNER RECORDATION

Corner NE1/16 S27 T. 34N R. 26W P.M.M. Lincoln County

Record of Original Corner

No previous record on file.

Description of Corner Evidence Found

No evidence found on ground

Description of Monument Set

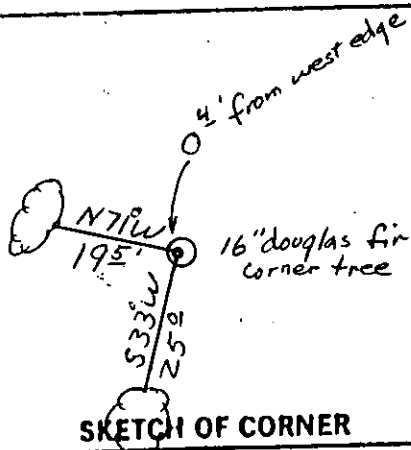
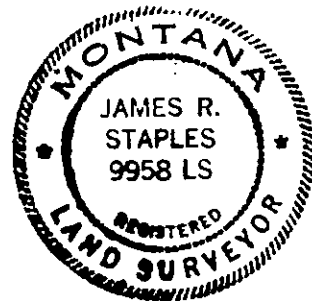
Unable to set monument - corner falls in 16" douglas fir (0.4' into west side of tree). Scribed tree NE1/16S27 and attached Land Survey Monument sign both on west side of tree from which:

An 8 1/2" larch bears S33°W, 25.0 ft. dis. scribed NE1/16S27BT

An 8" douglas fir bears N71°W, 19.5 ft. dis. scribed NE1/16S27BT

Distance to BTs measured from projected corner point in corner tree.

Bearing trees were signed and blazes painted red. Placed 6 ft. steel post with Land Survey Monument decal attached 6 ft. east of tree. Corner tree falls on a moderate SW slope in thick timber. Placed a K tag on a 7" larch on east side of road 75' west of corner.



SKETCH OF CORNER

CERTIFICATION

I, Steven R. Moyer

certify the information shown herein is true and correct.

Steven R. Moyer
Signature Ground Party Chief

I, James R. Staples

certify that this Corner Record correctly represents work performed by me or under my direction in compliance with the "Corner Recordation Act" (70-22-101, et seq., M.D.A.)

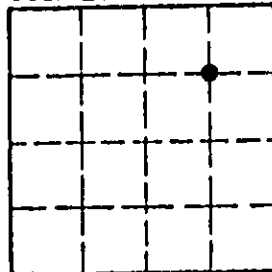
James R. Staples
Signature of Surveyor & Seal

Date: 10/5/90 Reg. No. 9958LS

Employer: J.R.S. & Associates

Office of Clerk and Recorder, County of Lincoln. This "corner record" was filed for record on the Nov 9 day of 1990 was noted on the cross-index plat and is assigned page No. 4319, in book No. Grant R. Staples by Bill Buckell
County Official

Sec. 27



Cross Index No. S-16 T. 34N R. 26W P.M.M.

• corner this sheet



U.S. DEPARTMENT OF STATE
OFFICE OF THE SECRETARY OF DEFENSE

U.S. DEPARTMENT OF STATE
OFFICE OF THE SECRETARY OF DEFENSE

U.S. DEPARTMENT OF STATE
OFFICE OF THE SECRETARY OF DEFENSE