

INSTRUCTIONS

1. Original and/or subsequent record used to evaluate the corner position.
2. Description of evidence found; note discrepancies in the record, state method of establishing lost or obliterated corners.
3. Description of monument and accessories set to perpetuate the corner position.
4. Sketch or corner, show all pertinent data which can best be shown in a sketch example, corner marking, topography lies, position of accessories, etc.
5. Certification must be signed and sealed by Registered Land Surveyor in State of Montana.
6. Fill in Cross Index & Section Diagram at bottom of sheet.

CERTIFIED CORNER RECORDATION

Corner $\frac{1}{4}$ Section 30 & 31 T. 34N R. 26W P.M.M. LINCOLN County

RECORD: GLO 1895

Set a post 3' long, 3" sq., 24" in the ground for $\frac{1}{4}$ Sec. Cor., marked $\frac{1}{4}$ S on N face; from which

A pine 8" diam. bears S16 $\frac{1}{2}$ $^{\circ}$ E, 31 lks. dist. mkd $\frac{1}{4}$ S BT.

A fir 8" diam. bears N50 $\frac{1}{4}$ $^{\circ}$ E, 40 lks. dist. marked $\frac{1}{4}$ S BT.

RECORD: BLM 1960

The $\frac{1}{4}$ sec. cor. of secs. 30 and 31, as determined from the remains of the original bearing trees. At the corner point set an iron post 30" long, 2 $\frac{1}{2}$ " diam., 26" in the ground, in concrete, with brass cap from which The remains of the original bearing trees:

A dead spruce, 14" diam., bears N50 $\frac{1}{4}$ $^{\circ}$ E, 44 lks. dist., mkd. $\frac{1}{4}$ S BT.

A dead pine 9" diam., bears S16 $\frac{1}{2}$ $^{\circ}$ E, 31 lks. dist., mkd. $\frac{1}{4}$ S BT. (Record)

The new bearing trees:

A spruce 9" diam., bears N70 $^{\circ}$ E, 47 lks. dist., mkd. $\frac{1}{4}$ S30 BT.

A spruce 8" diam., bears S52 $\frac{3}{4}$ $^{\circ}$ E, 47 lks. dist., mkd. $\frac{1}{4}$ S31 BT.

FOUND:

3 $\frac{1}{2}$ " Brass Cap on a Steel Post.

14" dead standing 15' spruce N50 $^{\circ}$ E 29.3' $\frac{1}{4}$ S showing.

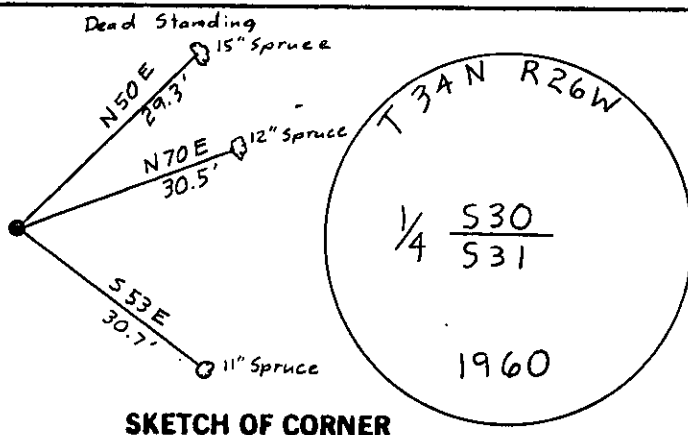
12" spruce N70 $^{\circ}$ E 30.5 scribing overgrown.

11" spruce S53 $^{\circ}$ E 30.7'.

9" dead down pine location of base unknown, this area floods and was moved.

MAINTENANCE:

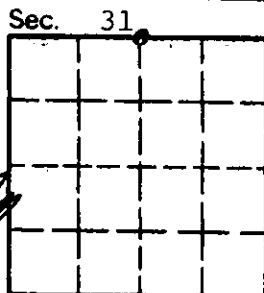
Set a Steel Post 3' South of corner with a LSM & property boundary sticker. Painted red band on BTs and attached correct signs to BTs.



SKETCH OF CORNER

CERTIFICATION
I, Glenn M. Knodle
certify the information shown herein is true and correct.
Glenn M. Knodle
Signature Ground Partner
2734 S
I, H. Gene Warren
certify that this Corner Record correctly represents work performed by me or under my direction in compliance with the "Corner Recordation Act" (70-23-101, et seq., M.D.A.)
H. Gene Warren
Signature of Surveyor & Seal
Date: 7-1-88 Reg. No. 2734S
Employer: Rocky Mountain Surveyors

Office of Clerk and Recorder, County of Lincoln. This "corner record" was filed for record on the July 29 day of 19 88 was noted on the cross-index plat and is assigned page No. 3881, in book No. _____
Count BT Survey by Bill Smith
County Official



Cross Index No. V-3 T. 34N R. 26W P.M.M.

• - corner this sheet

1. *Chlorophyll a* (Chl *a*)
 2. *Chlorophyll b* (Chl *b*)
 3. *Chlorophyll c* (Chl *c*)
 4. *Chlorophyll d* (Chl *d*)
 5. *Chlorophyll e* (Chl *e*)
 6. *Chlorophyll f* (Chl *f*)
 7. *Chlorophyll g* (Chl *g*)
 8. *Chlorophyll h* (Chl *h*)
 9. *Chlorophyll i* (Chl *i*)
 10. *Chlorophyll j* (Chl *j*)
 11. *Chlorophyll k* (Chl *k*)
 12. *Chlorophyll l* (Chl *l*)
 13. *Chlorophyll m* (Chl *m*)
 14. *Chlorophyll n* (Chl *n*)
 15. *Chlorophyll o* (Chl *o*)
 16. *Chlorophyll p* (Chl *p*)
 17. *Chlorophyll q* (Chl *q*)
 18. *Chlorophyll r* (Chl *r*)
 19. *Chlorophyll s* (Chl *s*)
 20. *Chlorophyll t* (Chl *t*)
 21. *Chlorophyll u* (Chl *u*)
 22. *Chlorophyll v* (Chl *v*)
 23. *Chlorophyll w* (Chl *w*)
 24. *Chlorophyll x* (Chl *x*)
 25. *Chlorophyll y* (Chl *y*)
 26. *Chlorophyll z* (Chl *z*)
 27. *Chlorophyll aa* (Chl *aa*)
 28. *Chlorophyll ab* (Chl *ab*)
 29. *Chlorophyll ac* (Chl *ac*)
 30. *Chlorophyll ad* (Chl *ad*)
 31. *Chlorophyll ae* (Chl *ae*)
 32. *Chlorophyll af* (Chl *af*)
 33. *Chlorophyll ag* (Chl *ag*)
 34. *Chlorophyll ah* (Chl *ah*)
 35. *Chlorophyll ai* (Chl *ai*)
 36. *Chlorophyll aj* (Chl *aj*)
 37. *Chlorophyll ak* (Chl *ak*)
 38. *Chlorophyll al* (Chl *al*)
 39. *Chlorophyll am* (Chl *am*)
 40. *Chlorophyll an* (Chl *an*)
 41. *Chlorophyll ao* (Chl *ao*)
 42. *Chlorophyll ap* (Chl *ap*)
 43. *Chlorophyll aq* (Chl *aq*)
 44. *Chlorophyll ar* (Chl *ar*)
 45. *Chlorophyll as* (Chl *as*)
 46. *Chlorophyll at* (Chl *at*)
 47. *Chlorophyll au* (Chl *au*)
 48. *Chlorophyll av* (Chl *av*)
 49. *Chlorophyll aw* (Chl *aw*)
 50. *Chlorophyll ax* (Chl *ax*)
 51. *Chlorophyll ay* (Chl *ay*)
 52. *Chlorophyll az* (Chl *az*)
 53. *Chlorophyll aza* (Chl *aza*)
 54. *Chlorophyll abz* (Chl *abz*)
 55. *Chlorophyll acz* (Chl *acz*)
 56. *Chlorophyll adz* (Chl *adz*)
 57. *Chlorophyll aez* (Chl *aez*)
 58. *Chlorophyll afz* (Chl *afz*)
 59. *Chlorophyll agz* (Chl *agz*)
 60. *Chlorophyll ahz* (Chl *ahz*)
 61. *Chlorophyll aiz* (Chl *aiz*)
 62. *Chlorophyll ajz* (Chl *ajz*)
 63. *Chlorophyll akz* (Chl *akz*)
 64. *Chlorophyll alz* (Chl *alz*)
 65. *Chlorophyll amz* (Chl *amz*)
 66. *Chlorophyll anz* (Chl *anz*)
 67. *Chlorophyll aoz* (Chl *aoz*)
 68. *Chlorophyll apz* (Chl *apz*)
 69. *Chlorophyll aqz* (Chl *aqz*)
 70. *Chlorophyll arz* (Chl *arz*)
 71. *Chlorophyll asz* (Chl *asz*)
 72. *Chlorophyll atz* (Chl *atz*)
 73. *Chlorophyll auz* (Chl *auz*)
 74. *Chlorophyll avz* (Chl *avz*)
 75. *Chlorophyll awz* (Chl *awz*)
 76. *Chlorophyll axz* (Chl *axz*)
 77. *Chlorophyll ayz* (Chl *ayz*)
 78. *Chlorophyll ayz* (Chl *ayz*)
 79. *Chlorophyll azz* (Chl *azz*)
 80. *Chlorophyll azaa* (Chl *aza*)
 81. *Chlorophyll abz* (Chl *abz*)
 82. *Chlorophyll acz* (Chl *acz*)
 83. *Chlorophyll adz* (Chl *adz*)
 84. *Chlorophyll aez* (Chl *aez*)
 85. *Chlorophyll afz* (Chl *afz*)
 86. *Chlorophyll agz* (Chl *agz*)
 87. *Chlorophyll ahz* (Chl *ahz*)
 88. *Chlorophyll aiz* (Chl *aiz*)
 89. *Chlorophyll ajz* (Chl *ajz*)
 90. *Chlorophyll akz* (Chl *akz*)
 91. *Chlorophyll alz* (Chl *alz*)
 92. *Chlorophyll amz* (Chl *amz*)
 93. *Chlorophyll anz* (Chl *anz*)
 94. *Chlorophyll aoz* (Chl *aoz*)
 95. *Chlorophyll apz* (Chl *apz*)
 96. *Chlorophyll aqz* (Chl *aqz*)
 97. *Chlorophyll arz* (Chl *arz*)
 98. *Chlorophyll asz* (Chl *asz*)
 99. *Chlorophyll atz* (Chl *atz*)
 100. *Chlorophyll auz* (Chl *auz*)
 101. *Chlorophyll avz* (Chl *avz*)
 102. *Chlorophyll awz* (Chl *awz*)
 103. *Chlorophyll axz* (Chl *axz*)
 104. *Chlorophyll ayz* (Chl *ayz*)
 105. *Chlorophyll ayz* (Chl *ayz*)
 106. *Chlorophyll azz* (Chl *azz*)
 107. *Chlorophyll azaa* (Chl *aza*)
 108. *Chlorophyll abz* (Chl *abz*)
 109. *Chlorophyll acz* (Chl *acz*)
 110. *Chlorophyll adz* (Chl *adz*)
 111. *Chlorophyll aez* (Chl *aez*)
 112. *Chlorophyll afz* (Chl *afz*)
 113. *Chlorophyll agz* (Chl *agz*)
 114. *Chlorophyll ahz* (Chl *ahz*)
 115. *Chlorophyll aiz* (Chl *aiz*)
 116. *Chlorophyll ajz* (Chl *ajz*)
 117. *Chlorophyll akz* (Chl *akz*)
 118. *Chlorophyll alz* (Chl *alz*)
 119. *Chlorophyll amz* (Chl *amz*)
 120. *Chlorophyll anz* (Chl *anz*)
 121. *Chlorophyll aoz* (Chl *aoz*)
 122. *Chlorophyll apz* (Chl *apz*)
 123. *Chlorophyll aqz* (Chl *aqz*)
 124. *Chlorophyll arz* (Chl *arz*)
 125. *Chlorophyll asz* (Chl *asz*)
 126. *Chlorophyll atz* (Chl *atz*)
 127. *Chlorophyll auz* (Chl *auz*)
 128. *Chlorophyll avz* (Chl *avz*)
 129. *Chlorophyll awz* (Chl *awz*)
 130. *Chlorophyll axz* (Chl *axz*)
 131. *Chlorophyll ayz* (Chl *ayz*)
 132. *Chlorophyll ayz* (Chl *ayz*)
 133.