

INSTRUCTIONS

1. Original and/or subsequent record used to evaluate the corner position.
2. Description of corner found, note discrepancies in the record, state method of establishing lost or obliterated corners.
3. Description of monument and accessories set to perpetuate the corner position.
4. Sketch or corner, show all pertinent data which can best be shown in a sketch example, corner marking, topography ties, position of accessories, etc.
5. Certification must be signed and sealed by Registered Land Surveyor in State of Montana.
6. Fill in Cross Index & Section Diagram at bottom of sheet.

CERTIFIED CORNER RECORDATION

Corner SE 1/16 Section 31 T. 34N R. 26W P.M.M. LINCOLN County

RECORD:

None found.

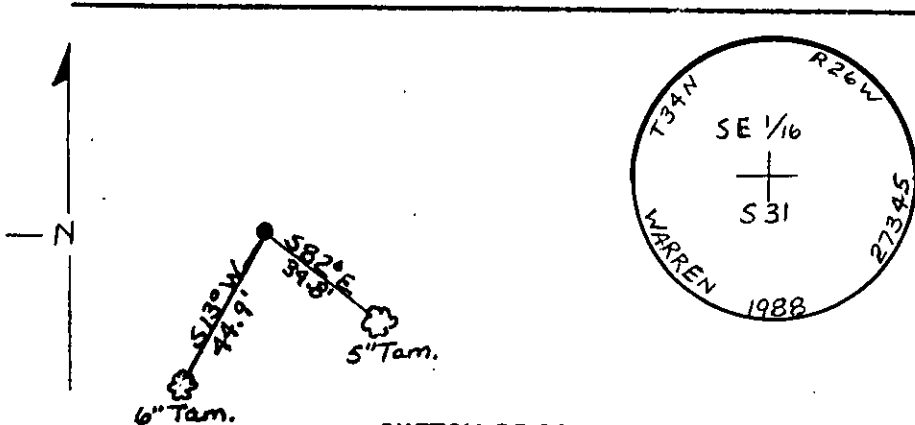
FOUND:

No corner monument found and no BT's.

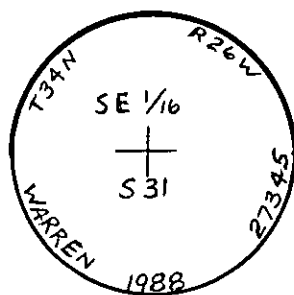
MAINTENANCE:

Set a 3½" Aluminum Cap on a 30" Aluminum Rod.
 6" Tamarack S13°W 44.9' scribed SE 1/16 S31 BT.
 5" Tamarack S82°E 34.8' scribed SE 1/16 S31 BT.
 Steel Post South 3'.

All trees have location tags and Attention or Land Surveying Monument signs on the back side - ring painted around tree.
 Declination used 19½°.



SKETCH OF CORNER



CERTIFICATION

I, Glenn M. Kneale WARREN
 certify the information shown herein to be true and correct.
 Signature Ground Party Chief 2734 S

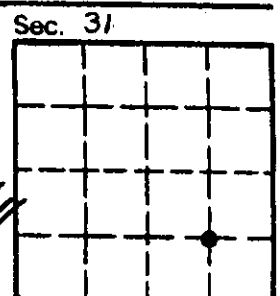
I, H. Gene Warren
 certify that this Corner Record correctly represents work performed by me or under my direction in compliance with the Corner Recordation Act" (70-23-101, et seq., M.D.A.)

H. Gene Warren
 Signature of Surveyor & Seal

Date: 7-1-88 Reg. No. 27345
 Employer: Rocky Mountain Surveyors

Office of Clerk and Recorder, County of Lincoln. This "corner record" was filed for record on the July 29, 1988 day of 19, was noted on the cross-index plat and is assigned page No. 3868, in book No. _____

Cross Index No. Y-4 T. 34N R. 26W P.M.M.



• corner this sheet

