

CERTIFIED LAND CORNER RE-EDIFICATION

DESCRIPTION OF CORNER EVIDENCE FOUND, AND ORIGINAL RECORD (IF KNOWN)

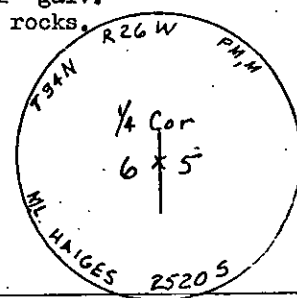
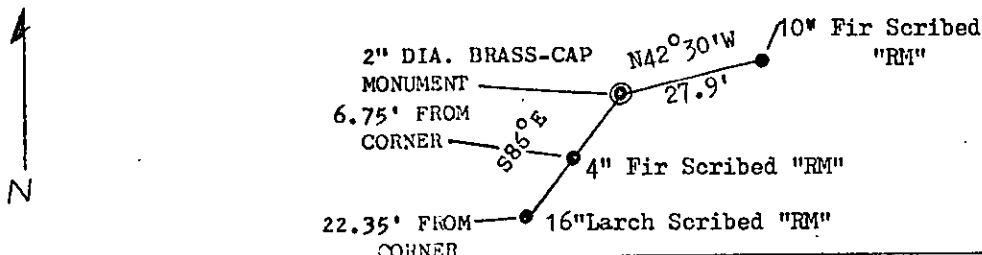
ORIGINAL G.L.O. NOTES: "Set a post 3ft. long, 3ins. square, 24 ins. in the ground, for 1-4 sec. Cor., marked 1-4S. on W face; from which A tamarack 8 ins. diam. bears N26°E 16 lks. dist. marked 1-4 S.B.T. A tamarack 12 ins. diam. bears S88°30'W 6 lks. dist. marked 1-4 S.B.T."

FOUND: SW Bearing tree stump with 1/4 S scribed in it, also found 24" long X 3" square post on the ground, also found remains of the post in the ground.

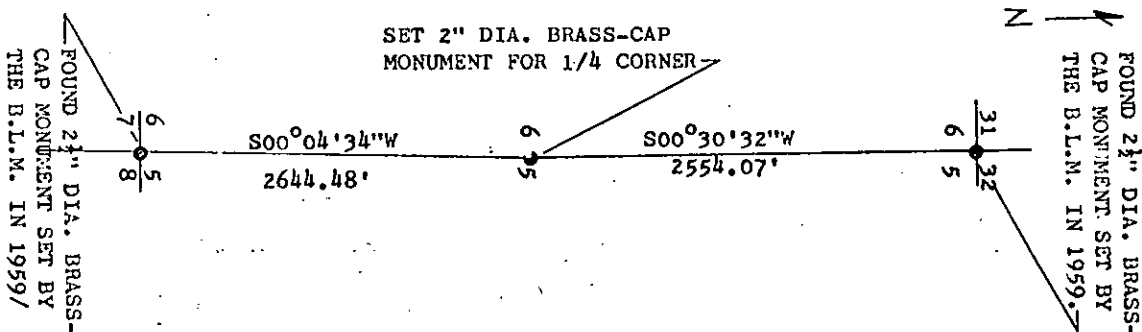
DESCRIPTION OF MONUMENT AND ACCESSORIES ESTABLISHED TO PERPETUATE THE ORIGINAL LOCATION OF THIS CORNER:

Date of work: May 10, 1973

To perpetuate this corner the original post monument was replaced with a 2" galv. pipe 30" long, with 6" flange, buried 12" in the ground and 2'x3' mound of rocks.



SKETCH, WITH COURSE AND DISTANCE TO ADJACENT CORNERS IF DETERMINED IN THIS SURVEY. (MAY SKETCH OR PASTE REPRODUCTION ON REVERSE SIDE.)



Surveyor's Seal

I, **JAMES BURTON**
certify that the information shown herein is true and correct.

James Burton
Signature of Ground Party Chief

I, **M.L. HAIGES**
certify that I have carefully performed or reviewed the work done on the diagrammed corner as reported on this recordation form and approve the same.

M.L. Haiges
Signature of Surveyor

DIAGRAM OF CORNER:

T34N R26W
N. 1-4 Cor



● = Corner recorded on the sheet

STATE OF MONTANA
COUNTY OF LINCOLN

Filed this 16th day of September A.D. 1973
at 11:20 P.M.
by Chas. L. Vaughn County Clerk.
By Mae Watson Deputy

25205
Registration Number

Office of Clerk and Recorder, County of Lincoln

This "corner record" was filed for record on the 16 day of September 1973, was noted on the cross-index plat and is assigned page No. 292, in book No. 1

