

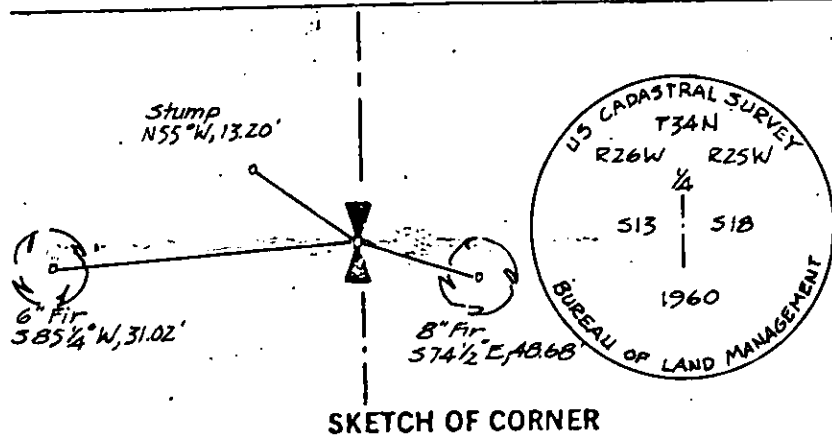
## INSTRUCTIONS

1. Original and/or subsequent record used to evaluate the corner position.
2. Description of evidence found, note discrepancies in the record, state method of establishing lost or obliterated corners.
3. Description of monument and accessories set to perpetuate the corner position.
4. Sketch or corner, show all pertinent data which can best be shown in a sketch example, corner marking, topography lies, position of accessories, etc.
5. Certification must be signed and sealed by Registered Land Surveyor in State of Montana.
6. Fill in Cross Index & Section Diagram at bottom of sheet.

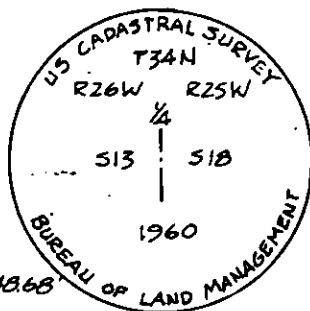
## CERTIFIED CORNER RECORDATION

Corner  $\frac{1}{4}$  corner 13/18 T. 34 N R. 26/25 W P.M.M. Lincoln County

1. 40.00 chains: Set a limestone 14 x 10 x 4 inches, 10 inches in the ground for the  $\frac{1}{4}$  section corner, marked " $\frac{1}{4}$ " on the W face, from which:  
An 8" fir bears N  $47^{\circ}$  E, 49 links, marked " $\frac{1}{4}$  S BT"  
A 14" tamarack bears N  $55^{\circ}$  W, 20 links, marked " $\frac{1}{4}$  S BT"
2. BLM 1960 - The  $\frac{1}{4}$  sec. cor. of secs. 13 and 18, on the W bdy. of the Tp., monumented with a limestone, 14 x 10 x 4 ins., firmly set and mkd.  $\frac{1}{4}$  on the W. face, and witnessed by the remains of the original bearing trees.  
At the corner point  
Set an iron post, 30 ins. long,  $2\frac{1}{2}$  ins. diam., 26 ins. in the ground in concrete, with brass cap mkd. (as shown below) from which:  
  
The remains of the original bearing trees:  
A fir, 17 ins. diam., bears N  $47^{\circ}$  E, 49 lks. dist., mkd. with an overgrown blaze. (Record)  
A stump, 13 ins. diam., bears N  $55^{\circ}$  W, 21 lks. dist., mk. BT.  
  
The new bearing trees:  
A fir, 7 ins. diam., bears S  $74\frac{1}{2}^{\circ}$  E, 22 lks. dist., mkd.  $\frac{1}{4}$  S 18 BT  
A fir, 6 ins. diam., bears S  $85\frac{1}{4}^{\circ}$  W, 47 lks. dist., mkd.  $\frac{1}{4}$  S 13 BT  
Bury the original stone alongside and raise a mound of stone, 3 ft. base, 2 ft. high, W. of the iron post.
3. Found a 1960 BLM brass cap marked as shown below from which:  
An 8" fir bears S  $74\frac{1}{2}^{\circ}$  E, 14.68 feet, with an overgrown blaze.  
A 6" fir bears S  $85\frac{1}{4}^{\circ}$  W, 31.02 feet, with some visible scribing.  
An original BT stump with "T" visible bears N  $55^{\circ}$  W, 13.20 feet.
4. I painted the monument and accessories with bright red paint and attached a Land Monument sign to a fence post 1 foot east of the corner. The corner is in an E-W fenceline.



SKETCH OF CORNER



## CERTIFICATION

James R. Staples

I, \_\_\_\_\_, certify the information shown herein is true and correct.

*James R. Staples*  
Signature Ground Party Chief

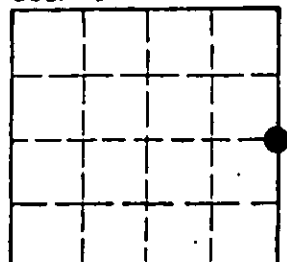
Jack H. Ninneman

I, \_\_\_\_\_, certify that this Corner Record correctly represents work performed by me or under my direction in compliance with the "Corner Recordation Act" (70-22-101, et seq., M.D.A.)

*Jack H. Ninneman*  
Signature of Surveyor & Seal

Date: 12/16/83 Reg. No. 46613Employer: Ninneman Engineering

Sec. 13



Office of Clerk and Recorder, County of Lincoln. This "corner record" was filed for record on the March 14 day of 1984 was noted on the cross-index plat and is assigned page No. #2528, in book No. \_\_\_\_\_

*James B. F. Sigel* by *Karen R. Kampfe*  
County Official deputy

corner this sheet

1  
J. P. THE J. C. G.  
1942  
1943  
1944

*Handwritten signature*