

## INSTRUCTIONS

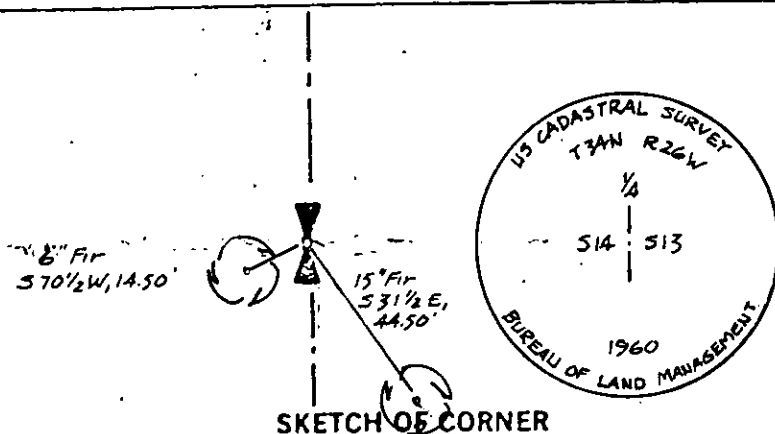
1. Original and/or subsequent record used to evaluate the corner position.
2. Description of evidence found, note discrepancies in the record, state method of establishing lost or obliterated corners.
3. Description of monument and accessories set to perpetuate the corner position.
4. Sketch of corner, show all pertinent data which can best be shown in a sketch example, corner marking, topography ties, position of accessories, etc.
5. Certification must be signed and sealed by Registered Land Surveyor in State of Montana.
6. Fill in Cross Index & Section Diagram at bottom of sheet.

## CERTIFIED CORNER RECORDATION

Corner  $\frac{1}{4}$  corner 14/13 T. 34 N R. 26 W P.M.M. Lincoln County

1. 40.00 chains: set a post, 3 feet long, 3 inches square, 24 inches in the ground for  $\frac{1}{4}$  section corner, marked  $\frac{1}{4}$ S. on W. face, from which:  
 A 6" fir bears S  $12^{\circ}$ E, 6 links, marked  $\frac{1}{4}$  S BT  
 A 6" fir bears S  $38^{\circ}$ W, 8 links, marked  $\frac{1}{4}$  S BT
2. BLM 1960 - The  $\frac{1}{4}$  sec. cor. of secs. 13 and 14, as determined from the remains of the original bearing trees.  
 At the corner point  
 Set an iron post, 30 ins. long,  $2\frac{1}{2}$  ins. diam., 26 ins. in the ground, in concrete, with brass cap mkd. (as shown below) from which:  
 The remains of the original bearing trees:  
 A stump, 14 ins. diam., bears S  $12^{\circ}$ E, 6 lks. dist., visible marks BT (Record)  
 A stump, 13 ins. diam., bears S  $38^{\circ}$ W, 8 lks. dist. (Record)  
 The new bearing trees:  
 A fir, 8 ins. diam., bears S  $31\frac{1}{2}^{\circ}$ E, 67 lks. dist., mkd.  $\frac{1}{4}$  S13 BT  
 A fir 5 ins. diam., bears S  $70\frac{1}{2}^{\circ}$ W, 23 lks. dist., mkd.  $\frac{1}{4}$  S14 BT  
 Raise a mound of stone, 3 ft. base, 2 ft. high, W. of the iron post.
3. Found a 1960 BLM brass cap marked as shown below from which:  
 A 6" fir bears S  $70\frac{1}{2}^{\circ}$ W, 14.5 feet, with overgrown blaze (BT tag)  
 A 15" fir bears S  $31\frac{1}{2}^{\circ}$ E, 44.5 feet, with overgrown blaze (BT tag)  
 The rotted remains of both original bearing tree stumps at record bearing and distance.

I painted the monument and accessories with bright red paint and attached a Land Monument sign to a fence corner 1 foot East of the corner.



CERTIFICATION

1. James R. Staples  
 certify the information shown herein is true and correct.  
James R. Staples  
 Signature Ground Party Chief

1. Jack H. Ninneman  
 certify that this Corner Record correctly represents work performed by me or under by direction in compliance with the "Corner Recordation Act" (70-22-101, et seq., M.U.A.)  
Jack H. Ninneman  
 Signature of Surveyor & Seal

Date: 12/16/82 Reg. No. 46613  
 Employer: Ninneman Engineering

Office of Clerk and Recorder, County of Lincoln County. This "corner record" was filed for record on the March 1<sup>st</sup> day of 1984 was noted on the cross-index plat and is assigned page No. #2525, in book No. \_\_\_\_\_

Janet B.F. Siegel by Karen L. Kampfe  
 County Official deputy

Sec. 13

