

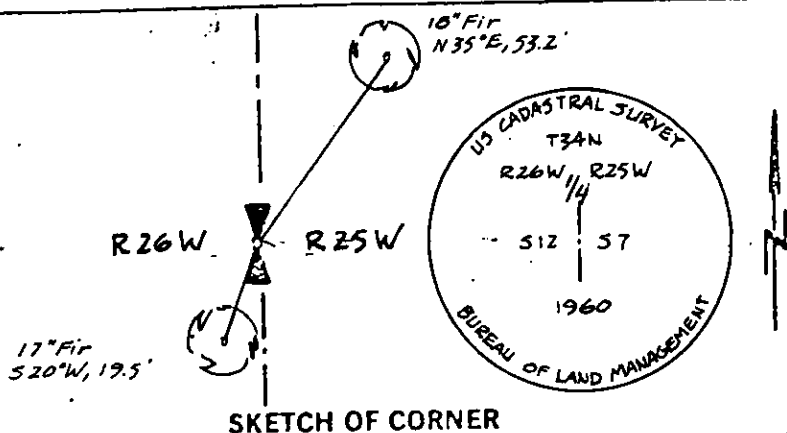
INSTRUCTIONS

1. Original and/or subsequent record used to evaluate the corner position.
2. Description of evidence found, note discrepancies in the record, state method of establishing lost or obliterated corners.
3. Description of monument and accessories set to perpetuate the corner position.
4. Sketch of corner, show all pertinent data which can best be shown in a sketch example, corner marking, topography ties, position of accessories, etc.
5. Certification must be signed and sealed by Registered Land Surveyor in State of Montana.
6. Fill in Cross Index & Section Diagram at bottom of sheet.

CERTIFIED CORNER RECORDATION

Corner $\frac{1}{4}$ 12/7 T. 34 N. R. 26/25 W. P.M.M. Lincoln County

1. 40.00 chains: Set a limestone 13" x 6" x 5", 9 inches in the ground for the $\frac{1}{4}$ section corner marked " $\frac{1}{4}$ " on the W. face, from which:
A 16" fir bears N 82°E, 11 links, marked " $\frac{1}{4}$ S BT"
A 14" tamarack bears N 76°W, 54 links, marked " $\frac{1}{4}$ S BT "
2. BLM 1960 - The $\frac{1}{4}$ sec. cor. of secs. 7 and 12, on the W. bdy. of the Tp., monumented with a limestone, 8 x 4 x 3 ins., loosely set and mkd. $\frac{1}{4}$ on the W. face, and witnessed by the remains of the original bearing trees.
At the corner point
Set an iron post, 30 ins. long, 2 $\frac{1}{2}$ ins. diam. 26 ins. in the ground, in concrete, with brass cap mkd. (as shown below) from which:
The remains of the original bearing trees:
A stump, 18 ins. diam., bears S 82°E, 11 lks. dist., visible mks BT. (Record: N 82°E, 11 lks.)
A stump, 18 ins. diam. bears N 76°W, 54 lks. dist., visible mks. BT. (Record)
The new bearing trees:
A fir, 6 ins. diam., bears N 35 $\frac{1}{4}$ °E, 80 lks. dist., mkd. $\frac{1}{4}$ S7 BT
A fir, 6 ins diam., bears S 20°W, 29 lks. dist., mkd. $\frac{1}{4}$ S 12 BT
Bury the original stone alongside and raise a mound of stone, 3 ft. base, 2 ft. high, W. of the iron post.
3. Found a 1960 BLM brass cap marked as shown below and 2 original bearing tree stumps at record bearing and distance.
A 17" fir bears S 20°W, 19.5 feet, with an overgrown blaze
A 18" fir bears N 35°E, 53.2 feet, with an overgrown blaze
4. I painted the monument and accessories with bright red paint and attached a Land Monument sign to a fence post 1 foot east of the corner.



CERTIFICATION

I, James R. Staples
certify the information shown herein is true and correct.
James R. Staples
Signature Ground Party Chief

I, Jack H. Ninneman
certify that this Corner Record correctly represents work performed by me or under my direction in compliance with the "Corner Recordation Act" (70-22-101, et seq., M.D.A.)
Jack H. Ninneman
Signature of Surveyor & Seal

Date: 12/16/83 Reg. No. 46615
Employer: Ninneman Engineering

Office of Clerk and Recorder, County of Lincoln. This "corner record" was filed for record on the March 1st day of 1984 was noted on the cross-index plat and is assigned page No. #2518, in book No. _____

Janet B. F. Siegel County Official
Karen L. Kampfe Deputy

Sec. 12

